

For Research Use Only



# CoraLite® Plus 488-conjugated mCherry Recombinant monoclonal antibody

Catalog Number: **CL488-81202-2**

## Basic Information

<b>Catalog Number:</b> CL488-81202-2	<b>GenBank Accession Number:</b> GeneID (NCBI):	<b>Purification Method:</b> Protein A purification
<b>Size:</b> 100ul , Concentration: 1000 ug/ml by Nanodrop;	<b>Full Name:</b> <b>Calculated MW:</b> 27 kDa	<b>CloneNo.:</b> 241830F8
<b>Source:</b> Rabbit		<b>Recommended Dilutions:</b> IF/ICC: 1:50-1:500
<b>Isotype:</b> IgG		<b>Excitation/Emission maxima wavelengths:</b> 493 nm / 522 nm
<b>Immunogen Catalog Number:</b> AG25320		

## Applications

<b>Tested Applications:</b> IF/ICC	<b>Positive Controls:</b> IF/ICC : Transfected HEK-293 cells,
<b>Species Specificity:</b> recombinant protein	

## Background Information

Red fluorescent proteins (RFPs) is a collective term referring to a heterogeneous group of red chromophore-carrying proteins, originating from various species and forming different protein lineages. The original RFP (dsRed) is a 225 amino acid fluorescent protein (25.9 kDa) derived from *Discosoma sp.*. It emits red light with a peak wavelength of 593 nm upon excitation by green light (excitation peak at 558 nm). When fused with other proteins, RFP serves as a versatile reporter protein e.g. for quantifying expression levels or facilitating visualization of subcellular localization through fluorescence microscopy. This antibody is a rabbit polyclonal antibody raised against mCherry.

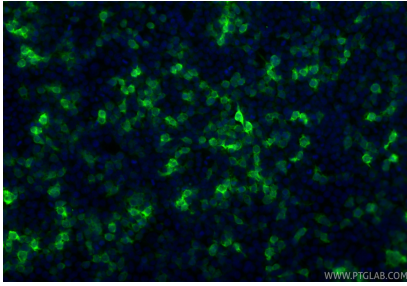
## Storage

**Storage:**  
Store at -20°C. Avoid exposure to light. Stable for one year after shipment.  
**Storage Buffer:**  
PBS with 50% glycerol, 0.05% Proclin300, 0.5% BSA, pH7.3  
**Aliquoting is unnecessary for -20°C storage**

For technical support and original validation data for this product please contact:  
T: 1 (888) 4PTGLAB (1-888-478-4522) (toll free in USA), or 1(312) 455-8498 (outside USA)  
E: [proteintech@ptglab.com](mailto:proteintech@ptglab.com)  
W: [ptglab.com](http://ptglab.com)

**This product is exclusively available under Proteintech Group brand and is not available to purchase from any other manufacturer.**

## Selected Validation Data



Immunofluorescent analysis of (-20°C Ethanol)  
fixed Transfected HEK-293 cells using CoraLite®  
Plus 488 mCherry antibody (CL488-81202-2, Clone:  
241830F8 ) at dilution of 1:200.