

For Research Use Only

# CoraLite® Plus 488-conjugated MMP2 Recombinant antibody

Catalog Number: CL488-81515-2



## Basic Information

<b>Catalog Number:</b> CL488-81515-2	<b>GenBank Accession Number:</b> BC002576	<b>Purification Method:</b> Protein A purification
<b>Size:</b> 100ul , Concentration: 1000 µg/ml by Nanodrop;	<b>GeneID (NCBI):</b> 4313	<b>CloneNo.:</b> 240131F5
<b>Source:</b> Rabbit	<b>UNIPROT ID:</b> P08253	<b>Recommended Dilutions:</b> IF/ICC: 1:50-1:500
<b>Isotype:</b> IgG	<b>Full Name:</b> matrix metalloproteinase 2 (gelatinase A, 72kDa gelatinase, 72kDa type IV collagenase)	<b>Excitation/Emission maxima wavelengths:</b> 493 nm / 522 nm
<b>Immunogen Catalog Number:</b> AG0549	<b>Calculated MW:</b> 72 kDa	
	<b>Observed MW:</b> 62-72 kDa	

## Applications

<b>Tested Applications:</b> IF/ICC	<b>Positive Controls:</b> IF/ICC : HepG2 cells,
<b>Species Specificity:</b> human	

## Background Information

MMP2, also named as CLG4A, Gelatinase Am, TBE-1 and PEX, belongs to the peptidase M10A family. It is ubiquitous metalloproteinase that is involved in diverse functions such as remodeling of the vasculature, angiogenesis, tissue repair, tumor invasion, inflammation, and atherosclerotic plaque rupture. MMP2 contributes to myocardial oxidative stress by regulating the activity of GSK3beta. It cleaves GSK3beta in vitro. MMP2 can be cleaved into PEX chain (~60kd). Western blot analysis showed that the 72 kDa and 62/65 kDa proteinase activities were pro-MMP2 and the active enzyme, respectively (PMID:11112697, PMID: 30867536).

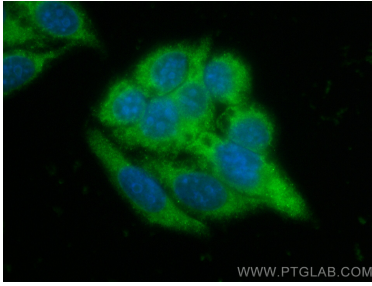
## Storage

**Storage:**  
Store at -20°C. Avoid exposure to light. Stable for one year after shipment.  
**Storage Buffer:**  
PBS with 50% glycerol, 0.05% Proclin300, 0.5% BSA, pH7.3  
**Aliquoting is unnecessary for -20°C storage**

For technical support and original validation data for this product please contact:  
T: 1 (888) 4PTGLAB (1-888-478-4522) (toll free in USA), or 1(312) 455-8498 (outside USA)  
E: [proteintech@ptglab.com](mailto:proteintech@ptglab.com)  
W: [ptglab.com](http://ptglab.com)

This product is exclusively available under Proteintech Group brand and is not available to purchase from any other manufacturer.

## Selected Validation Data



Immunofluorescent analysis of (-20°C Ethanol) fixed HepG2 cells using CoraLite® Plus 488 MMP2 antibody (CL488-81515-2, Clone: 240131F5 ) at dilution of 1:200.