

For Research Use Only

# CoraLite® Plus 488-conjugated ECHS1 Recombinant antibody

Catalog Number: CL488-81611

Featured Product



## Basic Information

Catalog Number:

CL488-81611

Size:

100ul , Concentration: 1000 µg/ml by Nanodrop;

Source:

Rabbit

Isotype:

IgG

Immunogen Catalog Number:

AG1842

GenBank Accession Number:

BC008906

GeneID (NCBI):

1892

UNIPROT ID:

P30084

Full Name:

enoyl Coenzyme A hydratase, short chain, 1, mitochondrial

Calculated MW:

31 kDa

Observed MW:

30 kDa

Purification Method:

Protein A purification

CloneNo.:

5G5

Recommended Dilutions:

IF/ICC 1:50-1:500

Excitation/Emission maxima wavelengths:

493 nm / 522 nm

## Applications

Tested Applications:

IF/ICC, FC (Intra)

Species Specificity:

human, mouse, rat

Positive Controls:

IF/ICC : HeLa cells,

## Background Information

Enoyl-coenzyme A hydratase (ECHS1) is a mitochondrial protein which catalyzes the hydration of 2-trans-enoyl-coenzyme A intermediates to L-3-hydroxyacyl-coenzyme A, playing a key role in metabolism of fatty acids in mitochondria. ECHS1 is highly expressed in muscle, liver and fibroblasts. Altered expression of ECHS1 has been considered a characteristic feature of mitochondria dysfunction. (23275097, 23235493)

## Storage

Storage:

Store at -20°C. Avoid exposure to light. Stable for one year after shipment.

Storage Buffer:

PBS with 50% Glycerol, 0.05% Proclin300, 0.5% BSA, pH 7.3.

Aliquoting is unnecessary for -20°C storage

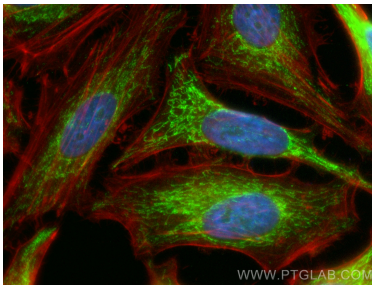
For technical support and original validation data for this product please contact:

T: 1 (888) 4PTGLAB (1-888-478-4522) (toll free in USA), or 1(312) 455-8498 (outside USA)

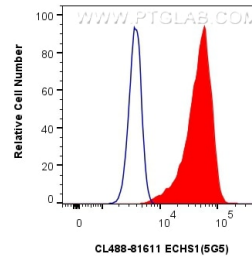
E: [proteintech@ptglab.com](mailto:proteintech@ptglab.com)  
W: [ptglab.com](http://ptglab.com)

This product is exclusively available under Proteintech Group brand and is not available to purchase from any other manufacturer.

## Selected Validation Data



Immunofluorescent analysis of (4% PFA) fixed HeLa cells using Coralite® Plus 488 ECHS1 antibody (CL488-81611, Clone: 5G5) at dilution of 1:200, CL594-Phalloidin (red).



$1 \times 10^6$  HeLa cells were intracellularly stained with 0.4  $\mu$ g Coralite® Plus 488-conjugated ECHS1 Recombinant antibody (CL488-81611, Clone: 5G5) (red), or 0.4  $\mu$ g Coralite® Plus 488-conjugated Rabbit IgG control Rabbit PolyAb (CL488-30000) (blue). Cells were fixed with 4% PFA and permeabilized with Flow Cytometry Perm Buffer (PF00011-C).