

For Research Use Only

CoraLite® Plus 488-conjugated Phospho-TSC2 (Ser939) Recombinant antibody

Catalog Number: CL488-81654



Basic Information

Catalog Number: CL488-81654	GenBank Accession Number: BC150300	Purification Method: Protein A purification
Size: 100ul , Concentration: 1000 ug/ml by Nanodrop;	GeneID (NCBI): 7249	CloneNo.: 2B18
Source: Rabbit	UNIPROT ID: P49815	Recommended Dilutions: FC (Intra): 0.25 ug per 10 ⁶ cells in a 100 µl suspension
Isotype: IgG	Full Name: tuberous sclerosis 2	Excitation/Emission maxima wavelengths: 493 nm / 522 nm
	Calculated MW: 1807 aa, 201 kDa	
	Observed MW: 200 kDa	

Applications

Tested Applications: FC (Intra)	Positive Controls: FC (Intra) : Calyculin A treated HEK-293 cells,
Species Specificity: human	

Background Information

TSC2, also named Tuberin, plays an essential role in the cellular energy response pathway. TSC2 forms a physical and functional complex with TSC1 that can inhibit the nutrient-mediated or growth factor-stimulated phosphorylation of S6K1 and EIF4EBP1 by negatively regulating mTORC1 signaling. Tuberin is phosphorylated on Ser939 and Thr1462 in response to PI3K activation and the human TSC complex is a direct biochemical target of the PI3K/Akt pathway (PMID: 12150915).

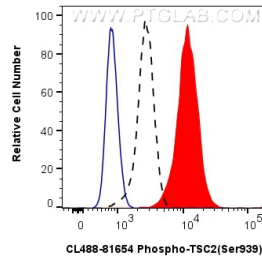
Storage

Storage:
Store at -20°C. Avoid exposure to light. Stable for one year after shipment.
Storage Buffer:
PBS with 50% glycerol, 0.05% Proclin300, 0.5% BSA, pH7.3
Aliquoting is unnecessary for -20°C storage

For technical support and original validation data for this product please contact:
T: 1 (888) 4PTGLAB (1-888-478-4522) (toll free in USA), or 1(312) 455-8498 (outside USA)
E: proteintech@ptglab.com
W: ptglab.com

This product is exclusively available under Proteintech Group brand and is not available to purchase from any other manufacturer.

Selected Validation Data



1X10⁶ HEK-293 cells untreated (dashed lines) or treated with Calyculin A which intracellularly stained with 0.25 ug Coralite® Plus 488 Phospho-Tsc2 (Ser939) Recombinant Antibody (CL488-81654, Clone:2B18)(red), or 0.25 ug Coralite® Plus 488 Rabbit IgG Isotype Control RecAb (CL488-98136, Clone: 240953C9) (blue). Cells were fixed with 4% PFA and permeabilized with 90% MeOH.