

For Research Use Only

CoraLite® Plus 488-conjugated Phospho-JUN (Thr91/93) Recombinant antibody

Catalog Number: CL488-81667-2



Basic Information

Catalog Number:

CL488-81667-2

Size:

100ul , Concentration: 1000 ug/ml by Nanodrop;

Source:

Rabbit

Isotype:

IgG

GenBank Accession Number:

BC068522

GeneID (NCBI):

3725

UNIPROT ID:

P05412

Full Name:

jun oncogene

Calculated MW:

331 aa, 36 kDa

Observed MW:

48 kDa

Purification Method:

Protein A purification

CloneNo.:

241983H8

Excitation/Emission maxima wavelengths:

493 nm / 522 nm

Applications

Tested Applications:

FC (Intra)

Species Specificity:

human, mouse

Background Information

JUN is also named as c-Jun and AP1, belongs to the bZIP family and Jun subfamily. JUN, the most extensively studied protein of the activator protein-1 (AP-1) complex, is involved in numerous cell activities, such as proliferation, apoptosis, survival, tumorigenesis and tissue morphogenesis. The phosphorylation of c-Jun by Plk3 immunoprecipitates was not altered by the pre-removal of JNK from the cell lysates. In addition, the effect of UV irradiation-induced phosphorylation of c-Jun and apoptosis were not significantly affected by knockdown of JNK mRNA. (PMID: 22180088, PMID: 17804415)

Storage

Storage:

Store at -20°C. Avoid exposure to light. Stable for one year after shipment.

Storage Buffer:

PBS with 50% Glycerol, 0.05% Proclin300, 0.5% BSA, pH 7.3.

Aliquoting is unnecessary for -20°C storage

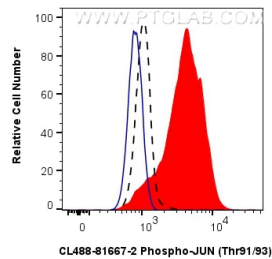
For technical support and original validation data for this product please contact:

T: 1 (888) 4PTGLAB (1-888-478-4522) (toll free in USA), or 1(312) 455-8498 (outside USA)

E: proteintech@ptglab.com
W: ptglab.com

This product is exclusively available under Proteintech Group brand and is not available to purchase from any other manufacturer.

Selected Validation Data



1X10⁶ NIH/3T3 cells untreated (dashed lines) or treated with UV which intracellularly stained with 0.25 ug CoraLite® Plus 488 Phospho-JUN (Thr91/93) Recombinant Antibody (CL488-81667-2, Clone:241983H8)(red), or 0.25 ug CoraLite® Plus 488 Rabbit IgG Isotype Control RecAb (CL488-98136, Clone: 240953C9) (blue). Cells were fixed with 4% PFA and permeabilized with 90% MeOH.