

For Research Use Only

# CoraLite® Plus 488-conjugated PIN1 Recombinant antibody

Catalog Number: CL488-81857

Featured Product



## Basic Information

Catalog Number:

CL488-81857

Size:

100ul , Concentration: 1000 ug/ml by Nanodrop;

Source:

Rabbit

Isotype:

IgG

Immunogen Catalog Number:

AG0767

GenBank Accession Number:

BC002899

GeneID (NCBI):

5300

UNIPROT ID:

Q13526

Full Name:

peptidylprolyl cis/trans isomerase, NIMA-interacting 1

Calculated MW:

18 kDa

Observed MW:

18 kDa

Purification Method:

Protein A purification

CloneNo.:

5N20

Recommended Dilutions:

IF/ICC 1:50-1:500

Excitation/Emission maxima

wavelengths:

493 nm / 522 nm

## Applications

Tested Applications:

IF/ICC, FC (Intra)

Species Specificity:

human, mouse, rat, pig

Positive Controls:

IF/ICC : NIH/3T3 cells,

## Background Information

PIN1(Peptidyl-prolyl cis-trans isomerase NIMA-interacting 1) is essential for mitosis progression in yeast cells and is hypothesized to perform the same role in mammalian cells. It might regulate cellular processes distinct from the cell cycle itself, such as terminal differentiation through a modulation of differentiation-specific gene expression(PMID:20801874). It colocalizes with NEK6 in the nucleus. Pin1 inhibition simultaneously blocks multiple cancer pathways, disrupts the desmoplastic and immunosuppressive TME, and upregulates PD-L1 and ENT1, rendering pancreatic ductal adenocarcinoma (PDAC) eradicable by immunochemotherapy (PMID: 34388391).

## Storage

Storage:

Store at -20°C. Avoid exposure to light. Stable for one year after shipment.

Storage Buffer:

PBS with 50% Glycerol, 0.05% Proclin300, 0.5% BSA, pH 7.3.

Aliquoting is unnecessary for -20°C storage

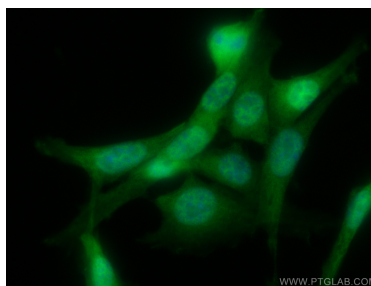
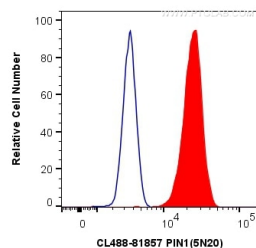
For technical support and original validation data for this product please contact:

T: 1 (888) 4PTGLAB (1-888-478-4522) (toll free in USA), or 1(312) 455-8498 (outside USA)

E: [proteintech@ptglab.com](mailto:proteintech@ptglab.com)  
W: [ptglab.com](http://ptglab.com)

This product is exclusively available under Proteintech Group brand and is not available to purchase from any other manufacturer.

## Selected Validation Data



$1 \times 10^6$  HeLa cells were intracellularly stained with 0.8  $\mu$ g CoraLite® Plus 488 Anti-Human PIN1 (CL488-81857, Clone: 5N20) (red), or 0.8  $\mu$ g Isotype Control. Cells were fixed and permeabilized with Transcription Factor Staining Buffer Kit (PF00011).

Immunofluorescent analysis of (4% PFA) fixed NIH/3T3 cells using CoraLite® Plus 488 PIN1 antibody (CL488-81857, Clone: 5N20) at dilution of 1:200.