

For Research Use Only

CoraLite® Plus 488-conjugated PINK1 Recombinant antibody

Catalog Number: CL488-81991-4



Basic Information

Catalog Number: CL488-81991-4	GenBank Accession Number: BC028215	Purification Method: Protein A purification
Size: 100ul , Concentration: 1000 ug/ml by Nanodrop;	GeneID (NCBI): 65018	CloneNo.: 240449E7
Source: Rabbit	UNIPROT ID: Q9BXM7	Excitation/Emission maxima wavelengths: 493 nm / 522 nm
Isotype: IgG	Full Name: PTEN induced putative kinase 1	
Immunogen Catalog Number: AG19825	Calculated MW: 581 aa, 63 kDa	
	Observed MW: 46 kDa	

Applications

Tested Applications:
FC (Intra)

Species Specificity:
human, mouse, rat

Background Information

PINK1 is a mitochondrial serine/threonine-protein kinase that protects cells from stress-induced mitochondrial dysfunction. The precursor of PINK1 (65 kDa) is synthesized in the cytosol and is imported into the outer membrane of mitochondria. PINK1 is further transferred into the inner membrane. The full-length PINK1 can be proteolytically processed into 52-55 kDa and 45-46 kDa forms (PMID: 18221368; 25108683; 18031932). The half-life of the mature form of PINK1 is very short and it was proposed that the proteasome is involved in its degradation (PMID: 23472196). The gene of PINK1 maps to chromosome 1p36.12. Two alternatively spliced variants exist, the shorter isoform (30 kDa) produced by alternative splicing. Mutations in the PINK1 gene cause autosomal recessive early-onset Parkinson's disease.

Storage

Storage:
Store at -20°C. Avoid exposure to light. Stable for one year after shipment.

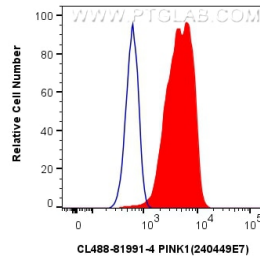
Storage Buffer:
PBS with 50% Glycerol, 0.05% Proclin300, 0.5% BSA, pH 7.3.

Aliquoting is unnecessary for -20°C storage

For technical support and original validation data for this product please contact:
T: 1 (888) 4PTGLAB (1-888-478-4522) (toll free in USA), or 1(312) 455-8498 (outside USA)
E: proteintech@ptglab.com
W: ptglab.com

This product is exclusively available under Proteintech Group brand and is not available to purchase from any other manufacturer.

Selected Validation Data



1×10^6 Jurkat cells were intracellularly stained with 0.25 μ g CoraLite® Plus 488 Pink1 Recombinant Antibody (CL488-81991-4, Clone: 240449E7) (red), or 0.25 μ g CoraLite® Plus 488 Rabbit IgG Isotype Control Recombinant Antibody (CL488-98136, Clone: 240953C9) (blue). Cells were fixed with 4% PFA and permeabilized with Flow Cytometry Perm Buffer (PF00011-C).