

For Research Use Only

CoraLite® Plus 488-conjugated FIS1 Recombinant antibody



Catalog Number: CL488-82248

Basic Information

Catalog Number: CL488-82248	GenBank Accession Number: BC009428	Purification Method: Protein A purification
Size: 100ul , Concentration: 1000 µg/ml by Nanodrop;	GeneID (NCBI): 51024	CloneNo.: 6N15
Source: Rabbit	UNIPROT ID: Q9Y3D6	Recommended Dilutions: IF 1:50-1:500
Isotype: IgG	Full Name: fission 1 (mitochondrial outer membrane) homolog (S. cerevisiae)	Excitation/Emission maxima wavelengths: 493 nm / 522 nm
Immunogen Catalog Number: AG1409	Calculated MW: 17 kDa	
	Observed MW: 15 kDa	

Applications

Tested Applications: IF, FC (Intra)	Positive Controls: IF : HepG2 cells,
Species Specificity: Human, mouse, rat	

Background Information

Fis1 (fission 1) is an integral mitochondrial outer membrane protein that participates in mitochondrial fission by interacting with dynamin-related protein 1 (Drp1). Excessive mitochondrial fission is associated with the pathology of a number of neurodegenerative or neurodevelopmental diseases. Increased expression of Fis1 has been found in Huntington's disease (HD)-affected brain, Alzheimer's disease (AD) patients, and autism spectrum disorder. (PMID: 21257639, 21459773, 23333625)

Storage

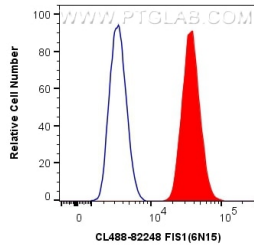
Storage:
Store at -20°C. Avoid exposure to light. Stable for one year after shipment.
Storage Buffer:
PBS with 50% Glycerol, 0.05% Proclin300, 0.5% BSA, pH 7.3.
Aliquoting is unnecessary for -20°C storage

*** 20ul sizes contain 0.1% BSA

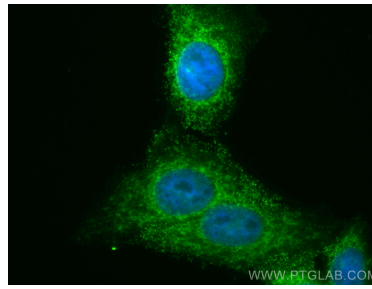
For technical support and original validation data for this product please contact:
T: 1 (888) 4PTGLAB (1-888-478-4522) (toll free in USA), or 1(312) 455-8498 (outside USA)
E: proteintech@ptglab.com
W: ptglab.com

This product is exclusively available under Proteintech Group brand and is not available to purchase from any other manufacturer.

Selected Validation Data



1×10^6 HepG2 cells were intracellularly stained with 0.8 μ g CoraLite® Plus 488 Anti-Human FIS1 (CL488-82248, Clone:6N15) (red), or 0.8 μ g Isotype Control. Cells were fixed with 4% PFA and permeabilized with Flow Cytometry Perm Buffer (PF00011-C).



Immunofluorescent analysis of (4% PFA) fixed HepG2 cells using CoraLite® Plus 488 FIS1 antibody (CL488-82248, Clone: 6N15) at dilution of 1:200.