

CoraLite® Plus 488-conjugated Cytokeratin 20 Recombinant antibody

Catalog Number: CL488-82428

Basic Information

Catalog Number: CL488-82428	GenBank Accession Number: BC031559	Purification Method: Protein A purification
Size: 100ul , Concentration: 1000 ug/ml by Nanodrop;	GeneID (NCBI): 54474	CloneNo.: 2H10
Source: Rabbit	UNIPROT ID: P35900	Recommended Dilutions: IF/ICC 1:50-1:500
Isotype: IgG	Full Name: keratin 20	Excitation/Emission maxima wavelengths: 493 nm / 522 nm
Immunogen Catalog Number: AG11308	Calculated MW: 424 aa, 48 kDa	
	Observed MW: 46 kDa	

Applications

Tested Applications: IF/ICC, FC (Intra)	Positive Controls: IF/ICC : HT-29 cells,
Species Specificity: Human, mouse, rat, pig	

Background Information

Keratins are a large family of proteins that form the intermediate filament cytoskeleton of epithelial cells, which are classified into two major sequence types. Type I keratins are a group of acidic intermediate filament proteins, including K9-K23, and the hair keratins Ha1-Ha8. Type II keratins are the basic or neutral counterparts to the acidic type I keratins, including K1-K8, and the hair keratins, Hb1-Hb6. Keratin 20 is a type I cytokeratin. It is a major cellular protein of mature enterocytes and goblet cells and is specifically found in the gastric and intestinal mucosa.

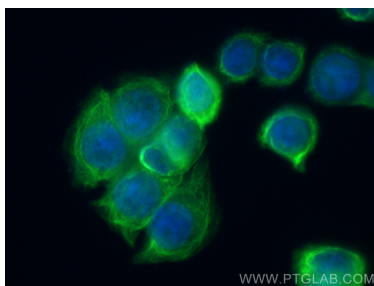
Storage

Storage:
Store at -20°C. Avoid exposure to light. Stable for one year after shipment.
Storage Buffer:
PBS with 50% Glycerol, 0.05% Proclin300, 0.5% BSA, pH 7.3.
Aliquoting is unnecessary for -20°C storage

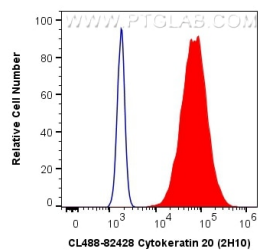
For technical support and original validation data for this product please contact:
T: 1 (888) 4PTGLAB (1-888-478-4522) (toll free in USA), or 1(312) 455-8498 (outside USA)
E: proteintech@ptglab.com
W: ptglab.com

This product is exclusively available under Proteintech Group brand and is not available to purchase from any other manufacturer.

Selected Validation Data



Immunofluorescent analysis of (-20°C Methanol) fixed HT-29 cells using CoraLite® Plus 488 Cytokeratin 20 antibody (CL488-82428, Clone: 2H10) at dilution of 1:200.



1X10⁶ HT-29 cells were intracellularly stained with 0.4 ug CoraLite® Plus 488 Anti-Human Cytokeratin 20 (CL488-82428, Clone:2H10) (red), or 0.4 ug CoraLite® Plus 488-conjugated Rabbit IgG control Rabbit PolyAb (CL488-30000, Clone:) (blue). Cells were fixed with 4% PFA and permeabilized with Flow Cytometry Perm Buffer (PF00011-C).