

For Research Use Only

CoraLite® Plus 488-conjugated CUL1 Recombinant antibody



Catalog Number: CL488-82474

Basic Information

Catalog Number: CL488-82474	GenBank Accession Number: BC034318	Purification Method: Protein A purification
Size: 100ul , Concentration: 1000 µg/ml by Nanodrop;	GeneID (NCBI): 8454	CloneNo.: 5K17
Source: Rabbit	UNIPROT ID: Q13616	Recommended Dilutions: IF 1:50-1:500
Isotype: IgG	Full Name: cullin 1	Excitation/Emission maxima wavelengths: 493 nm / 522 nm
Immunogen Catalog Number: AG3585	Calculated MW: 90 kDa	
	Observed MW: 90 kDa	

Applications

Tested Applications: IF	Positive Controls: IF : HEK-293 cells,
Species Specificity: Human, rat, mouse	

Background Information

The cullin family proteins are scaffold proteins for the Ring finger type E3 ligases. Humans express seven cullin proteins: CUL1-3, CUL4A, CUL4B, CUL5, and CUL7. Each cullin protein can form an E3 ligase similar to the prototype Ring-type E3 ligase Skp1-CUL1-F-box complex. The Cullin-RING-finger type E3 ligases are important regulators in early embryonic development, as highlighted by genetic studies demonstrating that knock-out of CUL1, CUL3, or CUL4A in mice results in early embryonic lethality.

Storage

Storage:
Store at -20°C. Avoid exposure to light. Stable for one year after shipment.
Storage Buffer:
PBS with 50% Glycerol, 0.05% Proclin300, 0.5% BSA, pH 7.3.
Aliquoting is unnecessary for -20°C storage

*** 20ul sizes contain 0.1% BSA

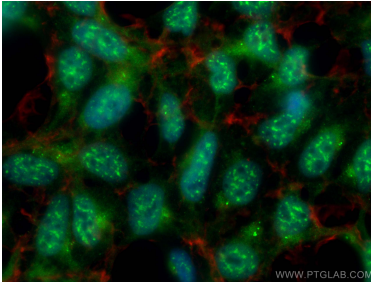
For technical support and original validation data for this product please contact:

T: 1 (888) 4PTGLAB (1-888-478-4522) (toll free
in USA), or 1(312) 455-8498 (outside USA)

E: proteintech@ptglab.com
W: ptglab.com

This product is exclusively available under Proteintech Group brand and is not available to purchase from any other manufacturer.

Selected Validation Data



Immunofluorescent analysis of (4% PFA) fixed HEK-293 cells using CoraLite® Plus 488 CUL1 antibody (CL488-82474, Clone: 5K17) at dilution of 1:200, CL594-phalloidin (red).