

For Research Use Only

CoraLite® Plus 488-conjugated KIF5B Recombinant antibody

Catalog Number: CL488-82485

Featured Product



Basic Information

Catalog Number:

CL488-82485

Size:

100ul , Concentration: 1000 ug/ml by Nanodrop;

Source:

Rabbit

Isotype:

IgG

Immunogen Catalog Number:

AG16250

GenBank Accession Number:

BC126279

GeneID (NCBI):

3799

UNIPROT ID:

P33176

Full Name:

kinesin family member 5B

Calculated MW:

963 aa, 110 kDa

Observed MW:

110-120 kDa

Purification Method:

Protein A purification

CloneNo.:

2B18

Recommended Dilutions:

IF/ICC 1:50-1:500

Excitation/Emission maxima wavelengths:

493 nm / 522 nm

Applications

Tested Applications:

IF/ICC, FC (Intra)

Species Specificity:

human, mouse, rat

Positive Controls:

IF/ICC : HepG2 cells,

Background Information

KIF5B, also known as KINH, KNS1, belongs to the Kinesin-1 family. KIF5B contains three structural domains: a globular N-terminal motor domain, a central alpha-helical rod domain, and a globular C-terminal domain. During the G2 phase of the cell cycle in a BICD2-dependent manner, KIF5B antagonizes the dynein function and drives the separation of nuclei and centrosomes (PMID: 20386726). KIF5B drives the polarization of cytoplasmic granules and microtubule-organizing centers (MTOCs) toward the immune synapse between effector NK lymphocytes and target cells (KIF5B:24088571).

Storage

Storage:

Store at -20°C. Avoid exposure to light. Stable for one year after shipment.

Storage Buffer:

PBS with 50% Glycerol, 0.05% Proclin300, 0.5% BSA, pH 7.3.

Aliquoting is unnecessary for -20°C storage

For technical support and original validation data for this product please contact:

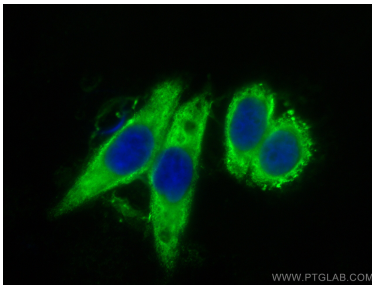
T: 1 (888) 4PTGLAB (1-888-478-4522) (toll free in USA), or 1(312) 455-8498 (outside USA)

E: proteintech@ptglab.com

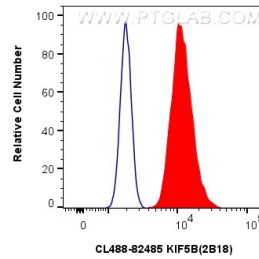
W: ptglab.com

This product is exclusively available under Proteintech Group brand and is not available to purchase from any other manufacturer.

Selected Validation Data



Immunofluorescent analysis of (-20°C Ethanol) fixed HepG2 cells using Coralite® Plus 488 KIF5B antibody (CL488-82485, Clone: 2B18) at dilution of 1:200.



1x10⁶ HepG2 cells were intracellularly stained with 0.4 ug Coralite® Plus 488-conjugated KIF5B Recombinant antibody (CL488-82485, Clone:2B18) (red), or 0.4 ug Coralite® Plus 488-conjugated Rabbit IgG control Rabbit PolyAb (CL488-30000) (blue). Cells were fixed with 4% PFA and permeabilized with Flow Cytometry Perm Buffer (PF00011-C).