

CoraLite® Plus 488-conjugated Stathmin 1 Recombinant antibody

Catalog Number: **CL488-82559**

Basic Information

Catalog Number: CL488-82559	GenBank Accession Number: BC014353	Purification Method: Protein A purification
Size: 100ul , Concentration: 1000 µg/ml by Nanodrop;	GeneID (NCBI): 3925	CloneNo.: 2H6
Source: Rabbit	UNIPROT ID: P16949	Recommended Dilutions: IF/ICC 1:200-1:800
Isotype: IgG	Full Name: stathmin 1/oncoprotein 18	Excitation/Emission maxima wavelengths: 493 nm / 522 nm
Immunogen Catalog Number: AG1633	Calculated MW: 18 kDa	
	Observed MW: 18 kDa	

Applications

Tested Applications: IF/ICC, FC (Intra)	Positive Controls: IF/ICC : HeLa cells,
Species Specificity: human, rat	

Background Information

Stathmin 1 (STMN1) normally regulates microtubule dynamics either by sequestering free tubulin heterodimers or by promoting microtubule catastrophe. STMN1 is highly expressed in fetal and adult brain, spinal cord, and cerebellum. Many different phosphorylated forms are observed depending on specific combinations among the sites which can be phosphorylated. Phosphorylation of stathmin is involved in response to NGF, neuron polarization and microtubule polymerization inhibition activity. Increased expression of STMN1 has been observed in a variety of human malignancies, such as colorectal primary tumors and metastatic tissues, but its association with melanoma is so far not well known.

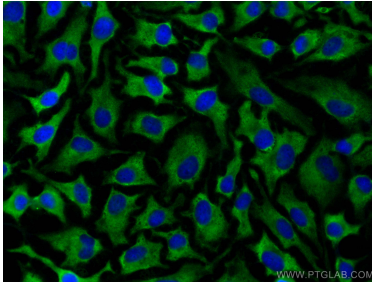
Storage

Storage:
Store at -20°C. Avoid exposure to light. Stable for one year after shipment.
Storage Buffer:
PBS with 50% Glycerol, 0.05% Proclin300, 0.5% BSA, pH 7.3.
Aliquoting is unnecessary for -20°C storage

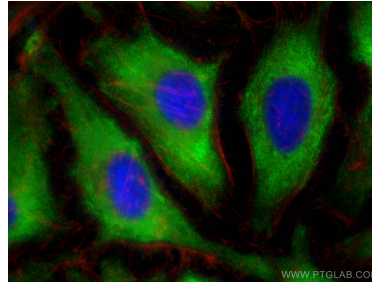
For technical support and original validation data for this product please contact:
T: 1 (888) 4PTGLAB (1-888-478-4522) (toll free in USA), or 1(312) 455-8498 (outside USA)
E: proteintech@ptglab.com
W: ptglab.com

This product is exclusively available under Proteintech Group brand and is not available to purchase from any other manufacturer.

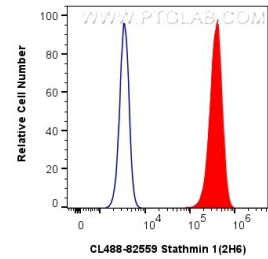
Selected Validation Data



Immunofluorescent analysis of (-20°C Ethanol) fixed HeLa cells using CoraLite® Plus 488 Stathmin 1 antibody (CL488-82559, Clone: 2H6) at dilution of 1:400.



Immunofluorescent analysis of (-20°C Ethanol) fixed HeLa cells using CoraLite® Plus 488 Stathmin 1 antibody (CL488-82559, Clone: 2H6) at dilution of 1:400, CL594-phalloidin (red).



1x10⁶ HeLa cells were intracellularly stained with 0.4 ug CoraLite® Plus 488-conjugated Stathmin 1 Recombinant antibody (CL488-82559, Clone:2H6) (red), or 0.4 ug CoraLite® Plus 488-conjugated Rabbit IgG control Rabbit PolyAb (CL488-30000) (blue). Cells were fixed with 4% PFA and permeabilized with Flow Cytometry Perm Buffer (PF00011-C).