

For Research Use Only

CoraLite® Plus 488-conjugated STAT6 Recombinant antibody

Catalog Number: CL488-82630



Basic Information

Catalog Number:

CL488-82630

Size:

100ul , Concentration: 1000 ug/ml by
Nanodrop;

Source:

Rabbit

Isotype:

IgG

GenBank Accession Number:

BC075852

GeneID (NCBI):

6778

UNIPROT ID:

P42226

Full Name:

signal transducer and activator of
transcription 6, interleukin-4 induced

Calculated MW:

94 kDa

Observed MW:

105-110 kDa

Purification Method:

Protein A purification

CloneNo.:

4F19

Recommended Dilutions:

IF/ICC 1:50-1:500

Excitation/Emission maxima
wavelengths:

493 nm / 522 nm

Applications

Tested Applications:

IF/ICC, FC (Intra)

Species Specificity:

human, mouse, rat

Positive Controls:

IF/ICC : HeLa cells,

Background Information

STAT6, also named as Signal transducer and activator of transcription 6, is a 847 amino acid protein, which belongs to the transcription factor STAT family. STAT6 forms a homodimer or a heterodimer with a related family member. STAT6 translocates into the nucleus in response to phosphorylation. STAT6 is Involved in IL4/interleukin-4- and IL3/interleukin-3-mediated signaling.

Storage

Storage:

Store at -20°C. Avoid exposure to light. Stable for one year after shipment.

Storage Buffer:

PBS with 50% Glycerol, 0.05% Proclin300, 0.5% BSA, pH 7.3.

Aliquoting is unnecessary for -20°C storage

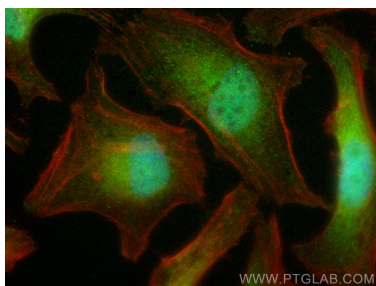
For technical support and original validation data for this product please contact:

T: 1 (888) 4PTGLAB (1-888-478-4522) (toll free
in USA), or 1(312) 455-8498 (outside USA)

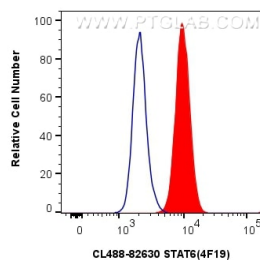
E: proteintech@ptglab.com
W: ptglab.com

This product is exclusively available under Proteintech Group brand and is not available to purchase from any other manufacturer.

Selected Validation Data



Immunofluorescent analysis of (4% PFA) fixed HeLa cells using CoraLite® Plus 488 STAT6 antibody (CL488-82630, Clone: 4F19) at dilution of 1:200, CL594-Phalloidin (red).



1x10⁶ HepG2 cells were intracellularly stained with 0.4 ug CoraLite® Plus 488-conjugated STAT6 Recombinant antibody (CL488-82630, Clone:4F19) (red), or 0.4 ug CoraLite® Plus 488-conjugated Rabbit IgG control Rabbit PolyAb (CL488-30000) (blue). Cells were fixed and permeabilized with Transcription Factor Staining Buffer Kit (PF00011).