

For Research Use Only

CoraLite® Plus 488-conjugated MX1 Recombinant antibody

Catalog Number:CL488-82677



Basic Information

Catalog Number: CL488-82677	GenBank Accession Number: BC032602	Purification Method: Protein A purification
Size: 100ul , Concentration: 1000 ug/ml by Nanodrop;	GeneID (NCBI): 4599	CloneNo.: 2L19
Source: Rabbit	UNIPROT ID: P20591	Recommended Dilutions: IF/ICC 1:50-1:500
Isotype: IgG	Full Name: Myxovirus resistance protein 1	Excitation/Emission maxima wavelengths: 493 nm / 522 nm
Immunogen Catalog Number: AG4692	Calculated MW: 662 aa, 76 kDa	
	Observed MW: 75 kDa	

Applications

Tested Applications: IF/ICC	Positive Controls: IF/ICC : A431 cells,
Species Specificity: Human	

Background Information

Mx1 (also known as MxA) is a GTPase that belongs to the Mx family of proteins, which are ubiquitous in eukaryotes and involved in the immune response to viral infections. The human Mx1 is localized in the cytoplasm interfering with the translation of viral proteins, whereas the mouse Mx1 accumulates in the nucleus and inhibits the primary transcription of viral RNA. Mx1 expression is induced by treatment with α/β IFN.

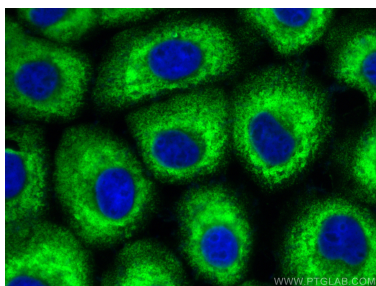
Storage

Storage:
Store at -20°C. Avoid exposure to light. Stable for one year after shipment.
Storage Buffer:
PBS with 50% Glycerol, 0.05% Proclin300, 0.5% BSA, pH 7.3.
Aliquoting is unnecessary for -20°C storage

For technical support and original validation data for this product please contact:
T: 1 (888) 4PTGLAB (1-888-478-4522) (toll free in USA), or 1(312) 455-8498 (outside USA)
E: proteintech@ptglab.com
W: ptglab.com

This product is exclusively available under Proteintech Group brand and is not available to purchase from any other manufacturer.

Selected Validation Data



Immunofluorescent analysis of (-20°C Ethanol) fixed A431 cells using CoraLite® Plus 488 MX1 antibody (CL488-82677, Clone: 2L19) at dilution of 1:200.