

For Research Use Only

CoraLite® Plus 488-conjugated RPL14 Recombinant monoclonal antibody

Catalog Number:CL488-82688



Basic Information

Catalog Number: CL488-82688	GenBank Accession Number: BC000606	Purification Method: Protein A purification
Size: 100ul , Concentration: 1000 ug/ml by Nanodrop;	GeneID (NCBI): 9045	CloneNo.: 2K22
Source: Rabbit	UNIPROT ID: P50914	Recommended Dilutions: IF/ICC: 1:300-1:1200
Isotype: IgG	Full Name: ribosomal protein L14	Excitation/Emission maxima wavelengths: 493 nm / 522 nm
Immunogen Catalog Number: AG6976	Calculated MW: 23 kDa	
	Observed MW: 23-27 kDa	

Applications

Tested Applications: IF/ICC	Positive Controls: IF/ICC : HepG2 cells,
Species Specificity: human	

Background Information

RPL14 is a component of the large ribosomal subunit. The protein belongs to the L14E family of ribosomal proteins. It contains a basic region-leucine zipper (bZIP)-like domain.

Storage

Storage:
Store at -20°C. Avoid exposure to light. Stable for one year after shipment.
Storage Buffer:
PBS with 50% glycerol, 0.05% Proclin300, 0.5% BSA, pH7.3
Aliquoting is unnecessary for -20°C storage

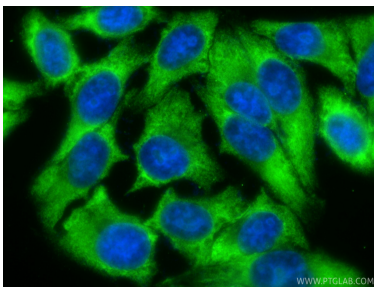
For technical support and original validation data for this product please contact:

T: 1 (888) 4PTGLAB (1-888-478-4522) (toll free
in USA), or 1(312) 455-8498 (outside USA)

E: proteintech@ptglab.com
W: ptglab.com

This product is exclusively available under Proteintech Group brand and is not available to purchase from any other manufacturer.

Selected Validation Data



Immunofluorescent analysis of (-20°C Ethanol) fixed HepG2 cells using CoraLite® Plus 488 RPL14 antibody (CL488-82688, Clone: 2K22) at dilution of 1:600.