

For Research Use Only

# CoraLite® Plus 488-conjugated ACTA1-Specific Recombinant monoclonal antibody



Catalog Number: CL488-82714-5

## Basic Information

<b>Catalog Number:</b> CL488-82714-5	<b>GenBank Accession Number:</b> NM_001100	<b>Purification Method:</b> Protein A purification
<b>Size:</b> 100ul , Concentration: 1000 ug/ml by Nanodrop;	<b>GeneID (NCBI):</b> 58	<b>CloneNo.:</b> 5B15
<b>Source:</b> Rabbit	<b>UNIPROT ID:</b> P68133	<b>Recommended Dilutions:</b> IF-P: 1:50-1:500
<b>Isootype:</b> IgG	<b>Full Name:</b> actin, alpha 1, skeletal muscle	<b>Excitation/Emission maxima wavelengths:</b> 493 nm / 522 nm
	<b>Calculated MW:</b> 42 kDa	
	<b>Observed MW:</b> 39-42 kDa	

## Applications

<b>Tested Applications:</b> IF-P	<b>Positive Controls:</b> IF-P : mouse skeletal muscle tissue,
<b>Species Specificity:</b> human, mouse, rat, pig, chicken	

## Background Information

Actins are highly conserved proteins that are involved in various types of cell motility and are ubiquitously expressed in all eukaryotic cells. The ACTA1 gene encodes skeletal muscle alpha-actin, the principal actin isoform in adult skeletal muscle, which interacts with a variety of proteins to produce the force for muscle contraction. There is only the N-terminal 8 amino acids difference among the actin family members. This antibody is specific to the ACTA1. It does not cross-react with other actin isoforms.

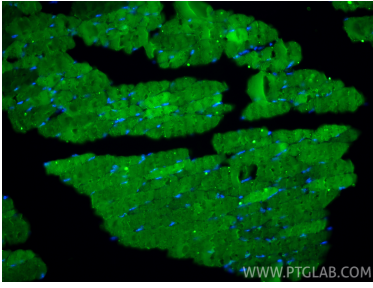
## Storage

**Storage:**  
Store at -20°C. Avoid exposure to light. Stable for one year after shipment.  
**Storage Buffer:**  
PBS with 50% glycerol, 0.05% Proclin300, 0.5% BSA, pH7.3  
Aliquoting is unnecessary for -20°C storage

For technical support and original validation data for this product please contact:  
T: 1 (888) 4PTGLAB (1-888-478-4522) (toll free in USA), or 1(312) 455-8498 (outside USA)  
E: proteintech@ptglab.com  
W: ptglab.com

This product is exclusively available under Proteintech Group brand and is not available to purchase from any other manufacturer.

## Selected Validation Data



Immunofluorescent analysis of (4% PFA) fixed paraffin-embedded mouse skeletal muscle tissue using CoraLite® Plus 488 ACTA1-Specific antibody (CL488-82714-5, Clone: 5B15 ) at dilution of 1:200. Heat mediated antigen retrieval with Tris-EDTA buffer (pH 9.0).