

For Research Use Only

CoraLite® Plus 488-conjugated Phospho-MYL9 (Thr19/Ser20) Recombinant antibody

Catalog Number:CL488-82717



Basic Information

Catalog Number:

CL488-82717

Size:

100ul , Concentration: 1000 ug/ml by
Nanodrop;

Source:

Rabbit

Isotype:

IgG

GenBank Accession Number:

BC002648

GeneID (NCBI):

10398

UNIPROT ID:

P24844

Full Name:

myosin, light chain 9, regulatory

Calculated MW:

20 kDa

Observed MW:

19-20 kDa

Purification Method:

Protein A purification

CloneNo.:

1G10

Excitation/Emission maxima
wavelengths:

493 nm / 522 nm

Applications

Tested Applications:

FC (Intra)

Species Specificity:

human, mouse

Background Information

Myosin regulatory light polypeptide 9 (MYL9), also known as MLC2, belongs to the myosin regulatory subunits. It plays an important role in regulation of both smooth muscle and nonmuscle cell contractile activity via its phosphorylation at Thr19 and Ser20. Implicated in cytokinesis, receptor capping, and cell locomotion (PMID:11942626, PMID:2526655). Some studies have demonstrated that MYL9 may play important roles in various human cancers. The expression and phosphorylation of MYL9 (Thr19/Ser20) may be increased in human breast (PMID: 22144583) and liver cancers (PMID: 18648664), while decreased in human colon (PMID: 22752057) and bladder cancers (PMID: 21139803). MYL9 was the only gene differentially expressed in the aged versus young injured arteries in the rat smooth muscle cell layers (PMID:22003410).

Storage

Storage:

Store at -20°C. Avoid exposure to light. Stable for one year after shipment.

Storage Buffer:

PBS with 50% Glycerol, 0.05% Proclin300, 0.5% BSA, pH 7.3.

Aliquoting is unnecessary for -20°C storage

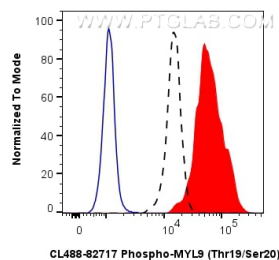
For technical support and original validation data for this product please contact:

T: 1 (888) 4PTGLAB (1-888-478-4522) (toll free
in USA), or 1(312) 455-8498 (outside USA)

E: proteintech@ptglab.com
W: ptglab.com

This product is exclusively available under Proteintech Group brand and is not available to purchase from any other manufacturer.

Selected Validation Data



1×10^6 Calyculin A treated HeLa cells were intracellularly stained with 0.4 μ g CoraLite® Plus 488 Phospho-Myl9 (Thr19/Ser20) Recombinant Antibody (CL488-82717, Clone:1G10)(red), or 0.4 μ g CoraLite® Plus 488 Rabbit IgG Isotype Control Recombinant Antibody (CL488-98136, Clone: 240953C9) (blue). Cells were fixed with 4% PFA and permeabilized with 90% MeOH.