

For Research Use Only

CoraLite® Plus 488-conjugated LDLR Recombinant monoclonal antibody

Catalog Number: CL488-82724



Basic Information

Catalog Number: CL488-82724	GenBank Accession Number: BC014514	Purification Method: Protein A purification
Size: 100ul , Concentration: 1000 ug/ml by Nanodrop;	GeneID (NCBI): 3949	CloneNo.: 1011
Source: Rabbit	ENSEMBL Gene ID: ENSG00000130164	Recommended Dilutions: IF/ICC: 1:50-1:500
Isotype: IgG	UNIPROT ID: P01130	Excitation/Emission maxima wavelengths: 493 nm / 522 nm
Immunogen Catalog Number: AG1236	Full Name: low density lipoprotein receptor	
	Calculated MW: 95 kDa	

Applications

Tested Applications: IF/ICC	Positive Controls: IF/ICC : HeLa cells,
Species Specificity: human, mouse, rat	

Background Information

LDLR (low density lipoprotein receptor) is a member of the LDL receptor gene family and is involved in receptor-mediated endocytosis of specific ligands. The LDLR is a cell surface glycoprotein that scavenges LDL from the blood and regulates plasma LDL cholesterol. The cytoplasmic domain of the LDL receptor is necessary for the receptor to cluster in coated pits, which promotes the rapid endocytosis of bound LDL. The protein is highly glycosylated through N- and O-linkages and thus migrates at 100 to 160 kDa bands on SDS-PAGE.

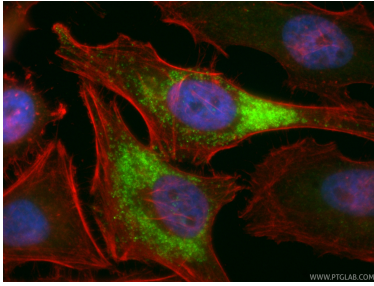
Storage

Storage:
Store at -20°C. Avoid exposure to light. Stable for one year after shipment.
Storage Buffer:
PBS with 50% glycerol, 0.05% Proclin300, 0.5% BSA, pH7.3
Aliquoting is unnecessary for -20°C storage

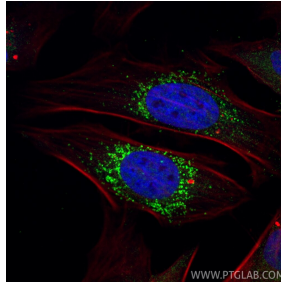
For technical support and original validation data for this product please contact:
T: 1 (888) 4PTGLAB (1-888-478-4522) (toll free in USA), or 1(312) 455-8498 (outside USA)
E: proteintech@ptglab.com
W: ptglab.com

This product is exclusively available under Proteintech Group brand and is not available to purchase from any other manufacturer.

Selected Validation Data



Immunofluorescent analysis of (4% PFA) fixed HeLa cells using CoraLite® Plus 488 LDLR antibody (CL488-82724, Clone: 1O11) at dilution of 1:200, CoraLite® 594-Phalloidin (red).



Immunofluorescent analysis of (4% PFA) fixed HeLa cells using CoraLite® Plus 488 LDLR antibody (CL488-82724, Clone: 1O11) at dilution of 1:200, CoraLite® 594-Phalloidin (red).