

For Research Use Only

# CoraLite® Plus 488-conjugated Albumin Recombinant antibody

Catalog Number:CL488-82783-6



## Basic Information

Catalog Number:

CL488-82783-6

GenBank Accession Number:

BC034023

Purification Method:

Protein A purification

Size:

100ul , Concentration: 1000 ug/ml by

Nanodrop;

GeneID (NCBI):

213

CloneNo.:

4K1

Source:

Rabbit

UNIPROT ID:

P02768

Recommended Dilutions:

IF-P 1:50-1:500

Isotype:

IgG

Full Name:

albumin

Excitation/Emission maxima  
wavelengths:

493 nm / 522 nm

Immunogen Catalog Number:

AG9569

Calculated MW:

609 aa, 69 kDa

Observed MW:

66 kDa

## Applications

Tested Applications:

IF-P

Positive Controls:

IF-P : mouse liver tissue,

Species Specificity:

human, mouse, rat

## Background Information

Albumin is the most abundant protein in blood plasma. Alterations of level of serum albumin are linked to variety of diseases. Albumin is expressed exclusively by well-differentiated hepatocytes, thus anti-albumin has been used to mark hepatocytes. (21388516, 23832071)

## Storage

Storage:

Store at -20°C. Avoid exposure to light. Stable for one year after shipment.

Storage Buffer:

PBS with 50% Glycerol, 0.05% Proclin300, 0.5% BSA, pH 7.3.

Aliquoting is unnecessary for -20°C storage

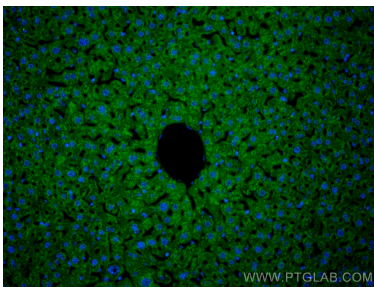
For technical support and original validation data for this product please contact:

T: 1 (888) 4PTGLAB (1-888-478-4522) (toll free  
in USA), or 1(312) 455-8498 (outside USA)

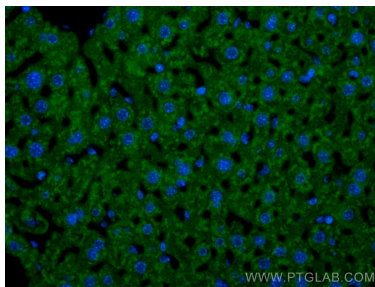
E: [proteintech@ptglab.com](mailto:proteintech@ptglab.com)  
W: [ptglab.com](http://ptglab.com)

This product is exclusively available under Proteintech Group brand and is not available to purchase from any other manufacturer.

## Selected Validation Data



Immunofluorescent analysis of (4% PFA) fixed paraffin-embedded mouse liver tissue using CoraLite® Plus 488 Albumin antibody (CL488-82783-6, Clone: 4K1 ) at dilution of 1:200. Heat mediated antigen retrieval with Tris-EDTA buffer (pH 9.0).



Immunofluorescent analysis of (4% PFA) fixed paraffin-embedded mouse liver tissue using CoraLite® Plus 488 Albumin antibody (CL488-82783-6, Clone: 4K1 ) at dilution of 1:200. Heat mediated antigen retrieval with Tris-EDTA buffer (pH 9.0).