

For Research Use Only

CoraLite® Plus 488-conjugated EDNRB Recombinant antibody

Catalog Number: CL488-82818-2



Basic Information

Catalog Number:

CL488-82818-2

Size:

100ul , Concentration: 1000 ug/ml by Nanodrop;

Source:

Rabbit

Isotype:

IgG

GenBank Accession Number:

NM_000115

GeneID (NCBI):

1910

UNIPROT ID:

P24530

Full Name:

endothelin receptor type B

Calculated MW:

50 kDa

Observed MW:

60 kDa

Purification Method:

Protein A purification

CloneNo.:

102

Excitation/Emission maxima wavelengths:

493 nm / 522 nm

Applications

Tested Applications:

FC (Intra)

Species Specificity:

human, mouse, rat

Background Information

EDNRB (endothelin receptor type B) is a G-protein coupled heptahelical endothelin-1 (EDN1) receptor. EDN1, a known mediator of human myometrial contraction in vitro, belongs to a family of three 21-amino acid isopeptides (PMID:18497345). EDNRB is a 442-residue protein expressed post-natally in many tissues, particularly in the myenteric plexus, mucosal layer, ganglia, and blood vessels of the submucosa of the colon (PMID:11434563). Moreover, Both the EDNRA and EDNRB are expressed in vessels and can be bound by EDN1, but while EDNRA mediates a constrictive effect, EDNRB is involved in vasorelaxation and functions as a clearance receptor that scavenges circulating EDN1 (PMID:30171849).

Storage

Storage:

Store at -20°C. Avoid exposure to light. Stable for one year after shipment.

Storage Buffer:

PBS with 50% Glycerol, 0.05% Proclin300, 0.5% BSA, pH 7.3.

Aliquoting is unnecessary for -20°C storage

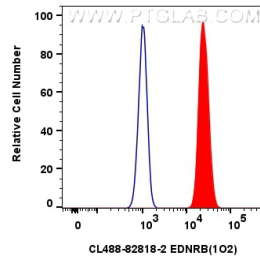
For technical support and original validation data for this product please contact:

T: 1 (888) 4PTGLAB (1-888-478-4522) (toll free in USA), or 1(312) 455-8498 (outside USA)

E: proteintech@ptglab.com
W: ptglab.com

This product is exclusively available under Proteintech Group brand and is not available to purchase from any other manufacturer.

Selected Validation Data



1x10⁶ Raji cells were intracellularly stained with 0.25 ug Coralite® Plus 488 EDNRB Recombinant Antibody (CL488-82818-2, Clone:102)(red), or 0.25 ug Coralite® Plus 488 Rabbit IgG Isotype Control Recombinant Antibody (CL488-98136, Clone: 240953C9) (blue). Cells were fixed with 4% PFA and permeabilized with Flow Cytometry Perm Buffer (PF00011-C).