

For Research Use Only

CoraLite® Plus 488-conjugated SHPK Recombinant antibody

Catalog Number: CL488-82875



Basic Information

Catalog Number: CL488-82875	GenBank Accession Number: BC020543	Purification Method: Protein A purification
Size: 100ul , Concentration: 1000 ug/ml by Nanodrop;	GeneID (NCBI): 23729	CloneNo.: 230115A4
Source: Rabbit	UNIPROT ID: Q9UHI6	Excitation/Emission maxima wavelengths: 493 nm / 522 nm
Isotype: IgG	Full Name: sedoheptulokinase	
Immunogen Catalog Number: AG33893	Calculated MW: 478 aa, 52 kDa	

Applications

Tested Applications:
FC (Intra)

Species Specificity:
Human

Background Information

SHPK, also named CARKL, is a carbohydrate kinase involved in the phosphorylation of sugars as they enter a cell, inhibiting return across the cell membrane (PubMed: 10673275). SHPK is a sedoheptulose kinase of the pentose phosphate pathway. It acts as a modulator of macrophage activation through control of glucose metabolism (PMID: 22682222).

Storage

Storage:
Store at -20°C. Avoid exposure to light. Stable for one year after shipment.

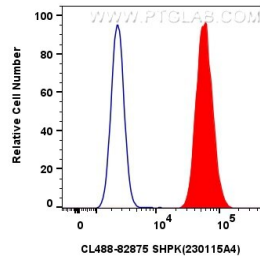
Storage Buffer:
PBS with 50% Glycerol, 0.05% Proclin300, 0.5% BSA, pH 7.3.

Aliquoting is unnecessary for -20°C storage

For technical support and original validation data for this product please contact:
T: 1 (888) 4PTGLAB (1-888-478-4522) (toll free in USA), or 1(312) 455-8498 (outside USA)
E: proteintech@ptglab.com
W: ptglab.com

This product is exclusively available under Proteintech Group brand and is not available to purchase from any other manufacturer.

Selected Validation Data



1×10^6 U2OS cells were intracellularly stained with 0.8 μ g Coralite® Plus 488 SHPK Recombinant Antibody (CL488-82875, Clone:230115A4)(red), or 0.8 μ g Coralite® Plus 488-conjugated Rabbit IgG control Rabbit PolyAb (CL488-30000) (blue). Cells were fixed and permeabilized with Transcription Factor Staining Buffer Kit (PF00011).