

For Research Use Only

# CoraLite® Plus 488-conjugated SAGE1 Recombinant antibody

Catalog Number: CL488-82876



## Basic Information

Catalog Number:

CL488-82876

Size:

100ul , Concentration: 1000 ug/ml by Nanodrop;

Source:

Rabbit

Isotype:

IgG

Immunogen Catalog Number:

AG34216

GenBank Accession Number:

NM\_018666.2

GeneID (NCBI):

55511

UNIPROT ID:

Q9NXZ1

Full Name:

sarcoma antigen 1

Calculated MW:

99kd

Purification Method:

Protein A purification

CloneNo.:

230094C11

Recommended Dilutions:

FC (Intra): 0.80 ug per 10<sup>6</sup> cells in a 100 µl suspension

Excitation/Emission maxima wavelengths:

493 nm / 522 nm

## Applications

Tested Applications:

FC (Intra)

Species Specificity:

human

Positive Controls:

FC (Intra) : U2OS cells,

## Background Information

Sarcoma antigen 1 (SAGE1) is a cancer/testis antigen that is limited to the spermatogonia and pre-meiotic spermatocytes and localized to the nuclei (PMID: 34465596).

## Storage

Storage:

Store at -20°C. Avoid exposure to light. Stable for one year after shipment.

Storage Buffer:

PBS with 50% glycerol, 0.05% Proclin300, 0.5% BSA, pH7.3

Aliquoting is unnecessary for -20°C storage

For technical support and original validation data for this product please contact:

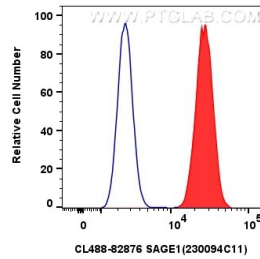
T: 1 (888) 4PTGLAB (1-888-478-4522) (toll free in USA), or 1(312) 455-8498 (outside USA)

E: [proteintech@ptglab.com](mailto:proteintech@ptglab.com)

W: [ptglab.com](http://ptglab.com)

This product is exclusively available under Proteintech Group brand and is not available to purchase from any other manufacturer.

## Selected Validation Data



$1 \times 10^6$  U2OS cells were intracellularly stained with 0.8  $\mu$ g Coralite® Plus 488 Sage1 Recombinant Antibody (CL488-82876, Clone:230094C11)(red), or 0.8  $\mu$ g Coralite® Plus 488-conjugated Rabbit IgG control Rabbit PolyAb (CL488-30000) (blue). Cells were fixed and permeabilized with Transcription Factor Staining Buffer Kit (PF00011).