

For Research Use Only

CoraLite® Plus 488-conjugated APOL6 Recombinant antibody

Catalog Number: CL488-82877-2



Basic Information

Catalog Number:

CL488-82877-2

Size:

100ul , Concentration: 1000 ug/ml by Nanodrop;

Source:

Rabbit

Isotype:

IgG

Immunogen Catalog Number:

AG24430

GenBank Accession Number:

BC038950

GeneID (NCBI):

80830

UNIPROT ID:

Q9BWW8

Full Name:

apolipoprotein L, 6

Calculated MW:

38 kDa

Purification Method:

Protein A purification

CloneNo.:

230162E11

Recommended Dilutions:

IF/ICC 1:300-1:1200

Excitation/Emission maxima wavelengths:

493 nm / 522 nm

Applications

Tested Applications:

IF/ICC

Species Specificity:

human

Positive Controls:

IF/ICC : HeLa cells,

Storage

Storage:

Store at -20°C. Avoid exposure to light. Stable for one year after shipment.

Storage Buffer:

PBS with 50% Glycerol, 0.05% Proclin300, 0.5% BSA, pH 7.3.

Aliquoting is unnecessary for -20°C storage

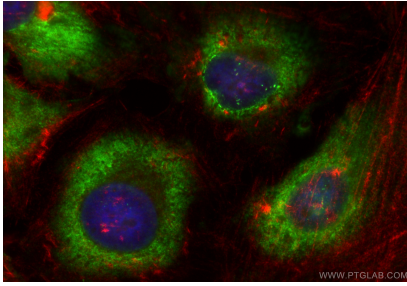
For technical support and original validation data for this product please contact:

T: 1 (888) 4PTGLAB (1-888-478-4522) (toll free in USA), or 1(312) 455-8498 (outside USA)

E: proteintech@ptglab.com
W: ptglab.com

This product is exclusively available under Proteintech Group brand and is not available to purchase from any other manufacturer.

Selected Validation Data



Immunofluorescent analysis of (-20°C Ethanol) fixed HeLa cells using CoraLite® Plus 488 APOL6 antibody (CL488-82877-2, Clone: 230162E11) at dilution of 1:600, CL594-Phalloidin (red).