

For Research Use Only

CoraLite® Plus 488-conjugated IFT88 Recombinant monoclonal antibody

Catalog Number:CL488-82886-2



Basic Information

Catalog Number: CL488-82886-2	GenBank Accession Number: BC030776	Purification Method: Protein A purification
Size: 100ul , Concentration: 1000 ug/ml by Nanodrop;	GeneID (NCBI): 8100	CloneNo.: 230074E12
Source: Rabbit	UNIPROT ID: Q13099	Recommended Dilutions: IF/ICC: 1:50-1:500
Isotype: IgG	Full Name: intraflagellar transport 88 homolog (Chlamydomonas)	Excitation/Emission maxima wavelengths: 493 nm / 522 nm
Immunogen Catalog Number: AG4980	Calculated MW: 94 kDa	
	Observed MW: 88-95 kDa	

Applications

Tested Applications: IF/ICC	Positive Controls: IF/ICC : hTERT-RPE1 cells,
Species Specificity: human	

Background Information

Intraflagellar transport (IFT), mediated by molecular motors and IFT particles, is an important transport process that occurs in the cilium and has been shown to be essential for the assembly and maintenance of cilia and flagella in many organisms. IFT88 (intraflagellar transport protein 88; also known as TG737 or TTC10) is a component of IFT particles and required for cilium biogenesis. Defects in IFT88/Tg737 lead to polycystic kidney disease (11062270). IFT88 localizes to spindle poles during mitosis and is required for spindle orientation in mitosis (21441926).

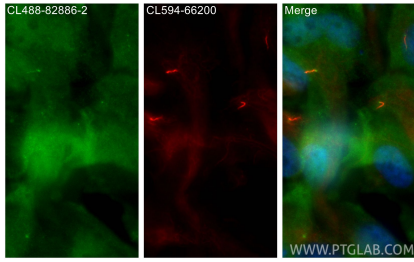
Storage

Storage:
Store at -20°C. Avoid exposure to light. Stable for one year after shipment.
Storage Buffer:
PBS with 50% glycerol, 0.05% Proclin300, 0.5% BSA, pH7.3
Aliquoting is unnecessary for -20°C storage

For technical support and original validation data for this product please contact:
T: 1 (888) 4PTGLAB (1-888-478-4522) (toll free in USA), or 1(312) 455-8498 (outside USA)
E: proteintech@ptglab.com
W: ptglab.com

This product is exclusively available under Proteintech Group brand and is not available to purchase from any other manufacturer.

Selected Validation Data



Immunofluorescent analysis of (4% PFA) fixed hTERT-RPE1 cells using CoraLite® Plus 488 IFT88 antibody (CL488-82886-2, Clone: 230074E12) at dilution of 1:200, CoraLite® 594 Acetyl-Tubulin (Lys40) antibody (CL594-66200, Clone: 7E5H8, red).