

For Research Use Only

CoraLite® Plus 488-conjugated Emerin Recombinant monoclonal antibody

Catalog Number: CL488-82888



Basic Information

Catalog Number: CL488-82888	GenBank Accession Number: BC000738	Purification Method: Protein A purification
Size: 100ul , Concentration: 1000 ug/ml by Nanodrop;	GeneID (NCBI): 2010	CloneNo.: 230089B1
Source: Rabbit	UNIPROT ID: P50402	Recommended Dilutions: IF/ICC: 1:50-1:500
Isotype: IgG	Full Name: emerin	Excitation/Emission maxima wavelengths: 493 nm / 522 nm
Immunogen Catalog Number: AG0236	Calculated MW: 34 kDa	

Applications

Tested Applications: IF/ICC	Positive Controls: IF/ICC : HeLa cells,
Species Specificity: human	

Background Information

Emerin (Emery-Dreifuss muscular dystrophy) (EMD or EDMD), a serine-rich nuclear membrane protein, is a member of the nuclear lamina-associated protein family. EMD may mediate membrane anchorage to the cytoskeleton by stabilizing and promoting the formation of a nuclear actin cortical network. Defects in EMD gene are the cause of Emery-Dreifuss muscular dystrophy type 1 (EDMD1), a degenerative myopathy characterized by weakness and atrophy of muscle without involvement of the nervous system, early contractures of the elbows Achilles tendons and spine, and cardiomyopathy associated with cardiac conduction defects. EMD inhibits beta-catenin activity by preventing its accumulation in the nucleus and is involved in HIV-1 infection.

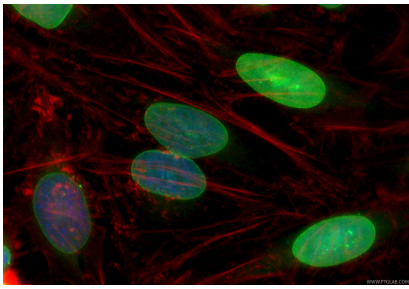
Storage

Storage:
Store at -20°C. Avoid exposure to light. Stable for one year after shipment.
Storage Buffer:
PBS with 50% glycerol, 0.05% Proclin300, 0.5% BSA, pH7.3
Aliquoting is unnecessary for -20°C storage

For technical support and original validation data for this product please contact:
T: 1 (888) 4PTGLAB (1-888-478-4522) (toll free in USA), or 1(312) 455-8498 (outside USA)
E: proteintech@ptglab.com
W: ptglab.com

This product is exclusively available under Proteintech Group brand and is not available to purchase from any other manufacturer.

Selected Validation Data



Immunofluorescent analysis of (4% PFA) fixed HeLa cells using CoraLite® Plus 488 Emerin antibody (CL488-82888, Clone: 230089B1) at dilution of 1:200, CL594-phalloidin (red).