

For Research Use Only

CoraLite® Plus 488-conjugated RRBP1 Recombinant antibody

Catalog Number: CL488-82890-3



Basic Information

Catalog Number: CL488-82890-3	GenBank Accession Number: BC128577	Purification Method: Protein A purification
Size: 100ul , Concentration: 1000 ug/ml by Nanodrop;	GeneID (NCBI): 6238	CloneNo.: 230159G10
Source: Rabbit	UNIPROT ID: Q9P2E9	Recommended Dilutions: IF/ICC 1:50-1:500
Isotype: IgG	Full Name: ribosome binding protein 1 homolog 180kDa (dog)	Excitation/Emission maxima wavelengths: 493 nm / 522 nm
Immunogen Catalog Number: AG16648	Calculated MW: 1410 aa, 152 kDa	
	Observed MW: 180 kDa	

Applications

Tested Applications: IF/ICC	Positive Controls: IF/ICC : HepG2 cells,
Species Specificity: human	

Background Information

Ribosome-binding protein 1 (RRBP1) is an endoplasmic reticulum membrane protein. It is a 1410 amino acid protein composed of a hydrophobic NH2-terminus that includes a transmembrane domain, a highly conserved tandem repeat (ribosome-binding domain), and an acidic coiled-coil COOH-terminal domain. RRBP1 acts as a ribosome receptor and mediates interaction between the ribosome and the endoplasmic reticulum membrane. It is also involved in early cardiac morphogenesis (PMID: 22709790; 8812507; 7686155). RRBP1 has two different isoforms with molecular weights of 150 kDa and 109 kDa.

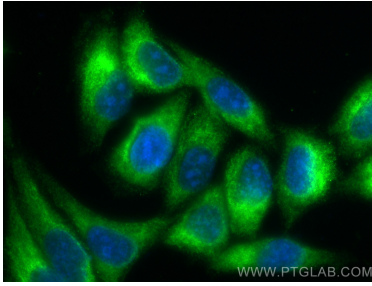
Storage

Storage:
Store at -20°C. Avoid exposure to light. Stable for one year after shipment.
Storage Buffer:
PBS with 50% Glycerol, 0.05% Proclin300, 0.5% BSA, pH 7.3.
Aliquoting is unnecessary for -20°C storage

For technical support and original validation data for this product please contact:
T: 1 (888) 4PTGLAB (1-888-478-4522) (toll free in USA), or 1(312) 455-8498 (outside USA)
E: proteintech@ptglab.com
W: ptglab.com

This product is exclusively available under Proteintech Group brand and is not available to purchase from any other manufacturer.

Selected Validation Data



Immunofluorescent analysis of (-20°C Ethanol) fixed HepG2 cells using Coralite® Plus 488 RRBp1 antibody (CL488-82890-3, Clone: 230159G10) at dilution of 1:200.