

For Research Use Only

# CoraLite® Plus 488-conjugated LAT Recombinant antibody

Catalog Number: CL488-82901



## Basic Information

### Catalog Number:

CL488-82901

### Size:

100ul , Concentration: 1000 ug/ml by  
Nanodrop;

### Source:

Rabbit

### Isotype:

IgG

### GenBank Accession Number:

BC011563

### GeneID (NCBI):

27040

### UNIPROT ID:

O43561

### Full Name:

linker for activation of T cells

### Calculated MW:

262 aa, 28 kDa

### Observed MW:

36-38 kDa

### Purification Method:

Protein A purification

### CloneNo.:

2P13

### Recommended Dilutions:

IF/ICC 1:50-1:500

### Excitation/Emission maxima wavelengths:

493 nm / 522 nm

## Applications

### Tested Applications:

IF/ICC, FC (Intra)

### Species Specificity:

human, mouse

### Positive Controls:

IF/ICC : Jurkat cells,

## Background Information

LAT is a membrane-localized adaptor protein which is primarily concentrated in microdomains by palmitoylation. LAT plays a central role in T-cell activation by nucleating signaling complexes that are critical for the propagation of T-cell signals from the plasma membrane to the cellular interior. In addition to being a positive regulator of T cell signaling, LAT also recruits several negative regulatory proteins, including kinases, phosphatases, and ubiquitin ligases, which ultimately leads to signal termination. LAT is subject to ubiquitylation, and ubiquitin-resistant mutants of LAT display enhanced signaling.

## Storage

### Storage:

Store at -20°C. Avoid exposure to light. Stable for one year after shipment.

### Storage Buffer:

PBS with 50% Glycerol, 0.05% Proclin300, 0.5% BSA, pH 7.3.

Aliquoting is unnecessary for -20°C storage

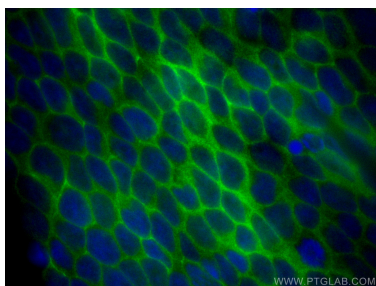
For technical support and original validation data for this product please contact:

T: 1 (888) 4PTGLAB (1-888-478-4522) (toll free  
in USA), or 1(312) 455-8498 (outside USA)

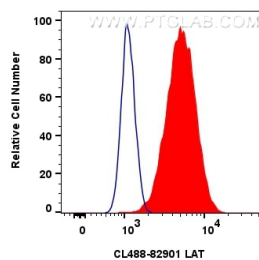
E: [proteintech@ptglab.com](mailto:proteintech@ptglab.com)  
W: [ptglab.com](http://ptglab.com)

This product is exclusively available under Proteintech  
Group brand and is not available to purchase from any  
other manufacturer.

## Selected Validation Data



Immunofluorescent analysis of (4% PFA) fixed Jurkat cells using CoraLite® Plus 488 LAT antibody (CL488-82901, Clone: 2P13) at dilution of 1:200.



1x10<sup>6</sup> Jurkat cells were intracellularly stained with 0.8 ug CoraLite® Plus 488 LAT Recombinant Antibody (CL488-82901, Clone:2P13)(red), or 0.8 ug CoraLite® Plus 488-conjugated Rabbit IgG control Rabbit PolyAb (CL488-30000) (blue). Cells were fixed with 4% PFA and permeabilized with Flow Cytometry Perm Buffer (PF00011-C).