

For Research Use Only

# CoraLite® Plus 488-conjugated HLA-DMB Recombinant antibody

Catalog Number: CL488-82922



## Basic Information

### Catalog Number:

CL488-82922

### Size:

100ul , Concentration: 1000 µg/ml by Nanodrop;

### Source:

Rabbit

### Isotype:

IgG

### Immunogen Catalog Number:

AG16320

### GenBank Accession Number:

BC027175

### GeneID (NCBI):

3109

### UNIPROT ID:

P28068

### Full Name:

major histocompatibility complex, class II, DM beta

### Calculated MW:

263 aa, 29 kDa

### Observed MW:

31 kDa

### Purification Method:

Protein A purification

### CloneNo.:

230123A3

### Recommended Dilutions:

IF/ICC: 1:50-1:500

### Excitation/Emission maxima wavelengths:

493 nm / 522 nm

## Applications

### Tested Applications:

IF/ICC

### Species Specificity:

human

### Positive Controls:

IF/ICC : Raji cells,

## Background Information

Human major histocompatibility complex (MHC) antigens, also referred to as human leukocyte antigens (HLA), are encoded by genes located on the short arm of chromosome 6 (6p21.3). There are two classes of HLA antigens: class I (HLA-A, B and C) and class II (HLA-D). The class II molecules are composed of two non-covalently associated alpha and beta chains. HLA-DMA and HLA-DMB form a functional heterodimer that is critical in the pathway of class II antigen presentation. HLA-DM plays a critical role in catalyzing the release of Class II HLA-associated invariant chain-derived peptides (CLIP) from newly synthesized class II HLA molecules and freeing the peptide binding site for acquisition of antigenic peptides.

## Storage

### Storage:

Store at -20°C. Avoid exposure to light. Stable for one year after shipment.

### Storage Buffer:

PBS with 50% glycerol, 0.05% Proclin300, 0.5% BSA, pH7.3

Aliquoting is unnecessary for -20°C storage

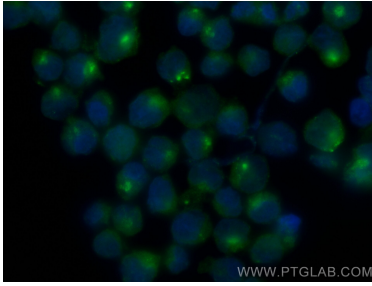
For technical support and original validation data for this product please contact:

T: 1 (888) 4PTGLAB (1-888-478-4522) (toll free in USA), or 1(312) 455-8498 (outside USA)

E: [proteintech@ptglab.com](mailto:proteintech@ptglab.com)  
W: [ptglab.com](http://ptglab.com)

This product is exclusively available under Proteintech Group brand and is not available to purchase from any other manufacturer.

## Selected Validation Data



Immunofluorescent analysis of (4% PFA) fixed Raji cells using Coralite® Plus 488 HLA-DMB antibody (CL488-82922, Clone: 230123A3 ) at dilution of 1:200.