

For Research Use Only

# CoraLite® Plus 488-conjugated RAB32 Recombinant antibody

Catalog Number: CL488-82960



## Basic Information

<b>Catalog Number:</b> CL488-82960	<b>GenBank Accession Number:</b> BC015061	<b>Purification Method:</b> Protein A purification
<b>Size:</b> 100ul , Concentration: 1000 ug/ml by Nanodrop;	<b>GeneID (NCBI):</b> 10981	<b>CloneNo.:</b> 230315A9
<b>Source:</b> Rabbit	<b>UNIPROT ID:</b> Q13637	<b>Recommended Dilutions:</b> WB 1:500-1:1000
<b>Isotype:</b> IgG	<b>Full Name:</b> RAB32, member RAS oncogene family	<b>Excitation/Emission maxima wavelengths:</b> 493 nm / 522 nm
<b>Immunogen Catalog Number:</b> AG1450	<b>Calculated MW:</b> 25 kDa	
	<b>Observed MW:</b> 25-28 kDa	

## Applications

<b>Tested Applications:</b> WB, FC (Intra)	<b>Positive Controls:</b> WB : HepG2 cells, HeLa cells
<b>Species Specificity:</b> human, rat	

## Background Information

Rab32 belongs to the Ras-like small GTPase superfamily, which regulate membrane dynamics, including membrane fusion/fission, exocytosis, and cytoskeletal trafficking. Rab32 anchors the type II regulatory subunit of protein kinase A to the mitochondrion and aids in mitochondrial fission. TRab32 also appears to be involved in autophagy and melanosome secretion.

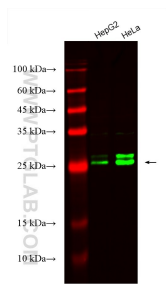
## Storage

**Storage:**  
Store at -20°C. Avoid exposure to light. Stable for one year after shipment.  
**Storage Buffer:**  
PBS with 50% Glycerol, 0.05% Proclin300, 0.5% BSA, pH 7.3.  
**Aliquoting is unnecessary for -20°C storage**

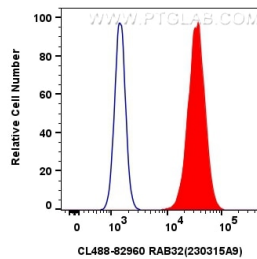
For technical support and original validation data for this product please contact:  
T: 1 (888) 4PTGLAB (1-888-478-4522) (toll free in USA), or 1(312) 455-8498 (outside USA)  
E: [proteintech@ptglab.com](mailto:proteintech@ptglab.com)  
W: [ptglab.com](http://ptglab.com)

This product is exclusively available under Proteintech Group brand and is not available to purchase from any other manufacturer.

## Selected Validation Data



Various lysates were subjected to SDS PAGE followed by western blot with CL488-82960 (RAB32 antibody) at dilution of 1:800 incubated at room temperature for 1.5 hours.



1x10<sup>6</sup> HeLa cells were intracellularly stained with 0.8 ug Coralite® Plus 488 Rab32 Recombinant Antibody (CL488-82960, Clone:230315A9)(red), or 0.8 ug Coralite® Plus 488-conjugated Rabbit IgG control Rabbit PolyAb (CL488-30000) (blue). Cells were fixed with 4% PFA and permeabilized with Flow Cytometry Perm Buffer (PF00011-C).