

For Research Use Only

CoraLite® Plus 488-conjugated Cytokeratin 1-specific Recombinant antibody

Catalog Number: CL488-82972



Basic Information

Catalog Number:

CL488-82972

GenBank Accession Number:

NM_006121

Size:

100ul , Concentration: 1000 ug/ml by
Nanodrop;

GeneID (NCBI):

3848

Source:

Rabbit

UNIPROT ID:

P04264

Isotype:

IgG

Full Name:

keratin 1

Calculated MW:

66 kDa

Observed MW:

67 kDa

Purification Method:

Protein A purification

CloneNo.:

230261F9

Excitation/Emission maxima
wavelengths:

493 nm / 522 nm

Applications

Tested Applications:

FC (Intra)

Species Specificity:

human, mouse, rat

Background Information

Keratins are a large family of proteins that form the intermediate filament cytoskeleton of epithelial cells, which are classified into two major sequence types. Type I keratins are a group of acidic intermediate filament proteins, including K9-K23, and the hair keratins Ha1-Ha8. Type II keratins are the basic or neutral counterparts to the acidic type I keratins, including K1-K8, and the hair keratins, Hb1-Hb6. Keratin-1 is type II keratin. It is a specific marker for terminal differentiation in mammalian epidermis. It is specifically expressed in the spinous and granular layers of the epidermis with family member KRT10 and mutations in these genes have been associated with bullous congenital ichthyosiform erythroderma.

Storage

Storage:

Store at -20°C. Avoid exposure to light. Stable for one year after shipment.

Storage Buffer:

PBS with 50% Glycerol, 0.05% Proclin300, 0.5% BSA, pH 7.3.

Aliquoting is unnecessary for -20°C storage

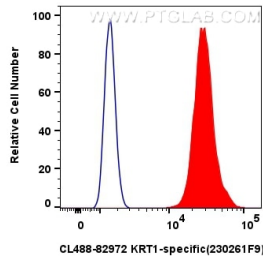
For technical support and original validation data for this product please contact:

T: 1 (888) 4PTGLAB (1-888-478-4522) (toll free
in USA), or 1(312) 455-8498 (outside USA)

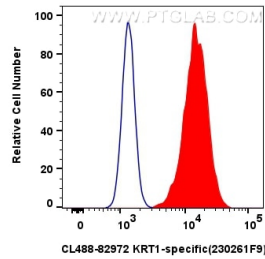
E: proteintech@ptglab.com
W: ptglab.com

This product is exclusively available under Proteintech Group brand and is not available to purchase from any other manufacturer.

Selected Validation Data



1x10⁶ A431 cells were intracellularly stained with 0.8 ug Coralite® Plus 488 Krt1-Specific Recombinant Antibody (CL488-82972, Clone:230261F9)(red), or 0.8 ug CoraLite® Plus 488-conjugated Rabbit IgG control Rabbit PolyAb (CL488-30000) (blue). Cells were fixed with 4% PFA and permeabilized with Flow Cytometry Perm Buffer (PF00011-C).



1x10⁶ MCF-7 cells were intracellularly stained with 0.8 ug Coralite® Plus 488 Krt1-Specific Recombinant Antibody (CL488-82972, Clone:230261F9)(red), or 0.8 ug CoraLite® Plus 488-conjugated Rabbit IgG control Rabbit PolyAb (CL488-30000) (blue). Cells were fixed with 4% PFA and permeabilized with Flow Cytometry Perm Buffer (PF00011-C).