

For Research Use Only

CoraLite® Plus 488-conjugated LAMP5 Recombinant antibody

Catalog Number: CL488-82992-2



Basic Information

Catalog Number: CL488-82992-2	GenBank Accession Number: BC050727	Purification Method: Protein A purification
Size: 100ul , Concentration: 1000 ug/ml by Nanodrop;	GeneID (NCBI): 24141	CloneNo.: 230102F12
Source: Rabbit	UNIPROT ID: Q9UJQ1	Recommended Dilutions: IF/ICC 1:50-1:500
Isotype: IgG	Full Name: chromosome 20 open reading frame 103	Excitation/Emission maxima wavelengths: 493 nm / 522 nm
Immunogen Catalog Number: AG33894	Observed MW: 31-35 kDa	

Applications

Tested Applications: IF/ICC	Positive Controls: IF/ICC : SH-SY5Y cells,
Species Specificity: human	

Background Information

LAMP5 (Lysosome-associated membrane glycoprotein 5) is also named as BAD-LAMP and C20orf103. BAD-LAMP is a novel biomarker of nonactivated human plasmacytoid dendritic cells (PMID: 21642595). LAMP5 may be one of the key genes in the development of Multiple myeloma (MM) as well as its recurrence (PMID: 37033323). LAMP5 is a mammalian ortholog of the Caenorhabditis elegans protein, UNC-46, which functions as a sorting factor to localize the vesicular GABA transporter UNC-47 to synaptic vesicles (PMID: 30867010). It was localized exclusively in inhibitory synaptic terminals (PMID: 30867010).

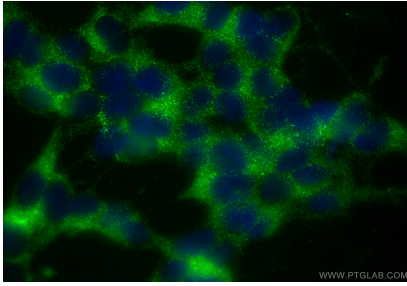
Storage

Storage:
Store at -20°C. Avoid exposure to light. Stable for one year after shipment.
Storage Buffer:
PBS with 50% Glycerol, 0.05% Proclin300, 0.5% BSA, pH 7.3.
Aliquoting is unnecessary for -20°C storage

For technical support and original validation data for this product please contact:
T: 1 (888) 4PTGLAB (1-888-478-4522) (toll free in USA), or 1(312) 455-8498 (outside USA)
E: proteintech@ptglab.com
W: ptglab.com

This product is exclusively available under Proteintech Group brand and is not available to purchase from any other manufacturer.

Selected Validation Data



Immunofluorescent analysis of (-20°C Ethanol)
fixed SH-SY5Y cells using CoraLite® Plus 488
LAMP5 antibody (CL488-82992-2, Clone:
230102F12) at dilution of 1:200.