

For Research Use Only

CoraLite® Plus 488-conjugated FDFT1 Recombinant antibody

Catalog Number: CL488-83020



Basic Information

Catalog Number:

CL488-83020

Size:

100ul , Concentration: 1000 ug/ml by Nanodrop;

Source:

Rabbit

Isotype:

IgG

Immunogen Catalog Number:

AG3743

GenBank Accession Number:

BC029641

GeneID (NCBI):

2222

UNIPROT ID:

P37268

Full Name:

farnesyl-diphosphate
farnesyltransferase 1

Calculated MW:

417 aa, 48 kDa

Observed MW:

48 kDa

Purification Method:

Protein A purification

CloneNo.:

230362C10

Recommended Dilutions:

IF/ICC 1:50-1:500

Excitation/Emission maxima
wavelengths:

493 nm / 522 nm

Applications

Tested Applications:

IF/ICC

Species Specificity:

human, mouse

Positive Controls:

IF/ICC : HepG2 cells,

Background Information

SQS (Squalene synthase), also known as Farnesyl-diphosphate farnesyltransferase 1 (FDFT1) is a gene that encodes the membrane-associated enzyme squalene synthase, which is the first specific enzyme in cholesterol biosynthesis. FDFT1 is highly expressed in liver, lung, prostate, breast, ovary, bladder, cervix, thyroid, and esophageal cancers, while in colorectal, colon, testicular, uterine, pancreas, and kidney tumors, its expression is downregulated (PMID: 35093030). FDFT1 is a key downstream target of the fasting response and may be involved in CRC cell glucose metabolism (PMID: 32313017).

Storage

Storage:

Store at -20°C. Avoid exposure to light. Stable for one year after shipment.

Storage Buffer:

PBS with 50% Glycerol, 0.05% Proclin300, 0.5% BSA, pH 7.3.

Aliquoting is unnecessary for -20°C storage

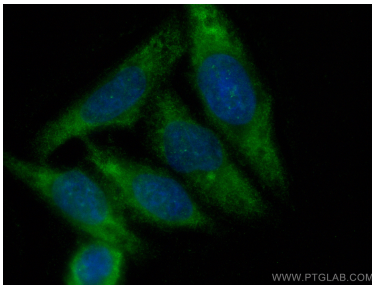
For technical support and original validation data for this product please contact:

T: 1 (888) 4PTGLAB (1-888-478-4522) (toll free
in USA), or 1(312) 455-8498 (outside USA)

E: proteintech@ptglab.com
W: ptglab.com

This product is exclusively available under Proteintech Group brand and is not available to purchase from any other manufacturer.

Selected Validation Data



Immunofluorescent analysis of (-20°C Ethanol) fixed HepG2 cells using CoraLite® Plus 488 FDFT1 antibody (CL488-83020, Clone: 230362C10) at dilution of 1:200.