

For Research Use Only

CoraLite® Plus 488-conjugated LCMT2 Recombinant antibody

Catalog Number: CL488-83073-2



Basic Information

Catalog Number: CL488-83073-2	GenBank Accession Number: BC015949	Purification Method: Protein A purification
Size: 100ul , Concentration: 1000 ug/ml by Nanodrop;	GeneID (NCBI): 9836	CloneNo.: 230405H8
Source: Rabbit	UNIPROT ID: O60294	Recommended Dilutions: IF/ICC 1:50-1:500
Isotype: IgG	Full Name: leucine carboxyl methyltransferase 2	Excitation/Emission maxima wavelengths: 493 nm / 522 nm
Immunogen Catalog Number: AG11145	Calculated MW: aa, 76 kDa	

Applications

Tested Applications: IF/ICC, FC (Intra)	Positive Controls: IF/ICC : HepG2 cells,
Species Specificity: Human	

Background Information

LCMT2, also known as tRNA wybutosine-synthesizing protein 4 (TYW4), is an S-adenosylmethionine (SAM)-dependent enzyme that catalyzes the final step of yW biosynthesis, methylation and methoxycarbonylation. LCMT2 has a conserved leucine carboxyl methyltransferase (LCM) domain in its N-terminal region (PMID: 16642040).

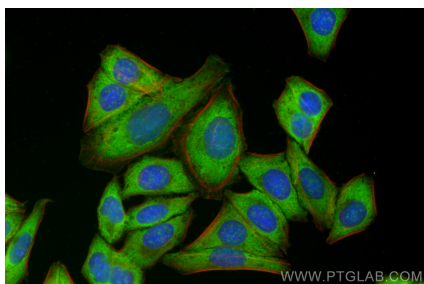
Storage

Storage:
Store at -20°C. Avoid exposure to light. Stable for one year after shipment.
Storage Buffer:
PBS with 50% Glycerol, 0.05% Proclin300, 0.5% BSA, pH 7.3.
Aliquoting is unnecessary for -20°C storage

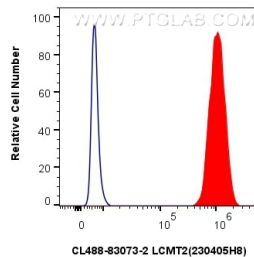
For technical support and original validation data for this product please contact:
T: 1 (888) 4PTGLAB (1-888-478-4522) (toll free in USA), or 1(312) 455-8498 (outside USA)
E: proteintech@ptglab.com
W: ptglab.com

This product is exclusively available under Proteintech Group brand and is not available to purchase from any other manufacturer.

Selected Validation Data



Immunofluorescent analysis of (-20°C Ethanol) fixed HepG2 cells using CoraLite® Plus 488 LCMT2 antibody (CL488-83073-2, Clone: 230405H8) at dilution of 1:200.



1x10⁶ HeLa cells were intracellularly stained with 0.8 ug CoraLite® Plus 488 Lcmt2 Recombinant Antibody (CL488-83073-2, Clone:230405H8)(red), or 0.8 ug CoraLite® Plus 488-conjugated Rabbit IgG control Rabbit PolyAb (CL488-30000) (blue). Cells were fixed with 4% PFA and permeabilized with Flow Cytometry Perm Buffer (PF00011-C).