

For Research Use Only

# CoraLite® Plus 488-conjugated COPA Recombinant antibody

Catalog Number: CL488-83089



## Basic Information

<b>Catalog Number:</b> CL488-83089	<b>GenBank Accession Number:</b> NM_004371	<b>Purification Method:</b> Protein A purification
<b>Size:</b> 100ul , Concentration: 1000 ug/ml by Nanodrop;	<b>GeneID (NCBI):</b> 1314	<b>CloneNo.:</b> 230361G2
<b>Source:</b> Rabbit	<b>UNIPROT ID:</b> P53621	<b>Recommended Dilutions:</b> IF/ICC 1:50-1:500
<b>Isotype:</b> IgG	<b>Full Name:</b> coatomer protein complex, subunit alpha	<b>Excitation/Emission maxima wavelengths:</b> 493 nm / 522 nm
<b>Immunogen Catalog Number:</b> AG34207	<b>Calculated MW:</b> 138 kDa	
	<b>Observed MW:</b> 150 kDa	

## Applications

<b>Tested Applications:</b> IF/ICC, FC (Intra)	<b>Positive Controls:</b> IF/ICC : A549 cells,
<b>Species Specificity:</b> human, mouse	

## Background Information

COPA, also named HEP-COP and Alpha-COP, is coatomer subunit alpha. The coatomer is a cytosolic protein complex that binds to dilysine motifs and reversibly associates with Golgi non-clathrin-coated vesicles, which further mediate biosynthetic protein transport from the ER, via the Golgi up to the trans Golgi network. Coatomer complex is required for budding from Golgi membranes, and is essential for the retrograde Golgi-to-ER transport of dilysine-tagged proteins.

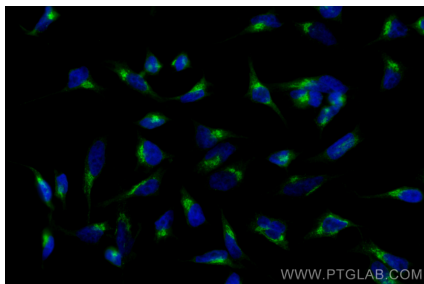
## Storage

**Storage:**  
Store at -20°C. Avoid exposure to light. Stable for one year after shipment.  
**Storage Buffer:**  
PBS with 50% Glycerol, 0.05% Proclin300, 0.5% BSA, pH 7.3.  
**Aliquoting is unnecessary for -20°C storage**

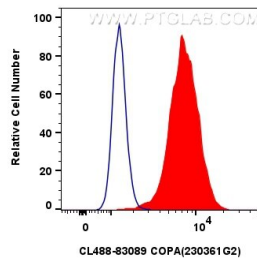
For technical support and original validation data for this product please contact:  
T: 1 (888) 4PTGLAB (1-888-478-4522) (toll free in USA), or 1(312) 455-8498 (outside USA)  
E: [proteintech@ptglab.com](mailto:proteintech@ptglab.com)  
W: [ptglab.com](http://ptglab.com)

This product is exclusively available under Proteintech Group brand and is not available to purchase from any other manufacturer.

## Selected Validation Data



Immunofluorescent analysis of (4% PFA) fixed A549 cells using CoraLite® Plus 488 COPA antibody (CL488-83089, Clone: 230361G2 ) at dilution of 1:200.



1x10<sup>6</sup> HeLa cells were intracellularly stained with 0.4 ug CoraLite® Plus 488 COPA Recombinant Antibody (CL488-83089, Clone:230361G2)(red), or 0.4 ug CoraLite® Plus 488-conjugated Rabbit IgG control Rabbit PolyAb (CL488-30000) (blue). Cells were fixed with 4% PFA and permeabilized with Flow Cytometry Perm Buffer (PF00011-C).