

For Research Use Only

CoraLite® Plus 488-conjugated PCYT1A Recombinant antibody

Catalog Number: CL488-83100



Basic Information

Catalog Number: CL488-83100	GenBank Accession Number: NM_005017	Purification Method: Protein A purification
Size: 100ul , Concentration: 1000 ug/ml by Nanodrop;	GeneID (NCBI): 5130	CloneNo.: 230393B4
Source: Rabbit	UNIPROT ID: P49585	Recommended Dilutions: IF/ICC 1:50-1:500
Isotype: IgG	Full Name: phosphate cytidyltransferase 1, choline, alpha	Excitation/Emission maxima wavelengths: 493 nm / 522 nm
Immunogen Catalog Number: AG34268	Calculated MW: 42 kDa	
	Observed MW: 38-41 kDa	

Applications

Tested Applications: IF/ICC, FC (Intra)	Positive Controls: IF/ICC : MCF-7 cells,
Species Specificity: human	

Background Information

PCYT1A (phosphate cytidyltransferase 1A, choline), also known as CTPCT. It is expected to be located in the nucleus and cytoplasm, which is enriched in brain, placenta, liver, fetal and adult lung. This gene belongs to the cytidyltransferase family and is involved in the regulation of phosphatidylcholine biosynthesis. Mutations in this gene are associated with spondylometaphyseal dysplasia with cone-rod dystrophy. The molecular weight of PCYT1A is 41 kDa.

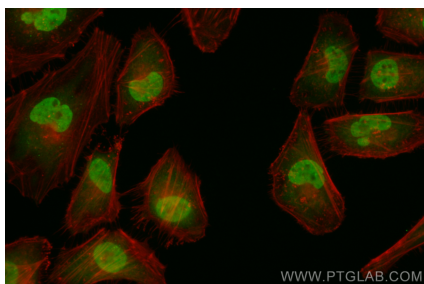
Storage

Storage:
Store at -20°C. Avoid exposure to light. Stable for one year after shipment.
Storage Buffer:
PBS with 50% Glycerol, 0.05% Proclin300, 0.5% BSA, pH 7.3.
Aliquoting is unnecessary for -20°C storage

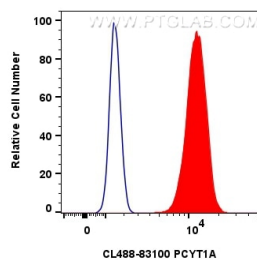
For technical support and original validation data for this product please contact:
T: 1 (888) 4PTGLAB (1-888-478-4522) (toll free in USA), or 1(312) 455-8498 (outside USA)
E: proteintech@ptglab.com
W: ptglab.com

This product is exclusively available under Proteintech Group brand and is not available to purchase from any other manufacturer.

Selected Validation Data



Immunofluorescent analysis of (4% PFA) fixed MCF-7 cells using CoraLite® Plus 488 PCYT1A antibody (CL488-83100, Clone: 230393B4) at dilution of 1:200.



1x10⁶ A431 cells were intracellularly stained with 0.8 ug CoraLite® Plus 488 Pcyt1a Recombinant Antibody (CL488-83100, Clone:230393B4)(red), or 0.8 ug CoraLite® Plus 488-conjugated Rabbit IgG control Rabbit PolyAb (CL488-30000) (blue). Cells were fixed and permeabilized with Transcription Factor Staining Buffer Kit (PF00011).