

For Research Use Only

# CoraLite® Plus 488-conjugated CELSR2 Recombinant antibody

Catalog Number: CL488-83115



## Basic Information

<b>Catalog Number:</b> CL488-83115	<b>GenBank Accession Number:</b> NM_001408	<b>Purification Method:</b> Protein A purification
<b>Size:</b> 100ul , Concentration: 1000 ug/ml by Nanodrop;	<b>GeneID (NCBI):</b> 1952	<b>CloneNo.:</b> 230319H5
<b>Source:</b> Rabbit	<b>UNIPROT ID:</b> Q9HCU4	<b>Recommended Dilutions:</b> IF/ICC 1:50-1:500
<b>Isotype:</b> IgG	<b>Full Name:</b> cadherin, EGF LAG seven-pass G-type receptor 2 (flamingo homolog, Drosophila)	<b>Excitation/Emission maxima wavelengths:</b> 493 nm / 522 nm
	<b>Calculated MW:</b> 318 kDa	

## Applications

<b>Tested Applications:</b> IF/ICC	<b>Positive Controls:</b> IF/ICC : SH-SY5Y cells,
<b>Species Specificity:</b> human	

## Background Information

CELSR2, also named CDHF10, EGFL2, KIAA0279, and MEGF3, belongs to the G-protein coupled receptor 2 family and LN-TM7 subfamily. It is a receptor that may be important in cell/cell signaling during nervous system formation.

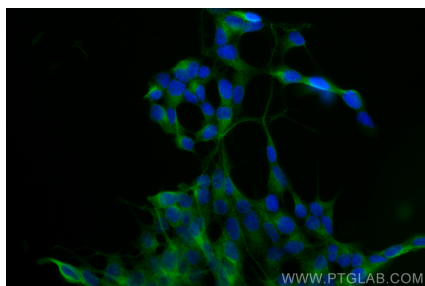
## Storage

**Storage:**  
Store at -20°C. Avoid exposure to light. Stable for one year after shipment.  
**Storage Buffer:**  
PBS with 50% Glycerol, 0.05% Proclin300, 0.5% BSA, pH 7.3.  
Aliquoting is unnecessary for -20°C storage

For technical support and original validation data for this product please contact:  
T: 1 (888) 4PTGLAB (1-888-478-4522) (toll free in USA), or 1(312) 455-8498 (outside USA)  
E: [proteintech@ptglab.com](mailto:proteintech@ptglab.com)  
W: [ptglab.com](http://ptglab.com)

This product is exclusively available under Proteintech Group brand and is not available to purchase from any other manufacturer.

## Selected Validation Data



Immunofluorescent analysis of (4% PFA) fixed SH-SY5Y cells using Coralite® Plus 488 CELSR2 antibody (CL488-83115, Clone: 230319H5 ) at dilution of 1:200.