

For Research Use Only

CoraLite® Plus 488-conjugated IFI35 Recombinant antibody

Catalog Number: CL488-83160-2



Basic Information

Catalog Number: CL488-83160-2	GenBank Accession Number: BC001356	Purification Method: Protein A purification
Size: 100ul , Concentration: 1000 ug/ml by Nanodrop;	GeneID (NCBI): 3430	CloneNo.: 240063C6
Source: Rabbit	UNIPROT ID: P80217	Recommended Dilutions: IF/ICC 1:50-1:500
Isotype: IgG	Full Name: interferon-induced protein 35	Excitation/Emission maxima wavelengths: 493 nm / 522 nm
Immunogen Catalog Number: AG34653	Calculated MW: 31 kDa	

Applications

Tested Applications: IF/ICC, FC (Intra)	Positive Controls: IF/ICC : HeLa cells,
Species Specificity: human	

Background Information

IFI35 (interferon induced protein 35), also known as IFP35. It is expected to be located in cytoplasm, nucleus and extracellular space. The protein is expressed in a wide range of cell types, including fibroblasts, macrophages, and epithelial cells. Involved in several processes, including macrophage activation involved in immune response; positive regulation of defense response; and regulation of signal transduction. And the calculated molecular weight of IFI35 is 31 kDa.

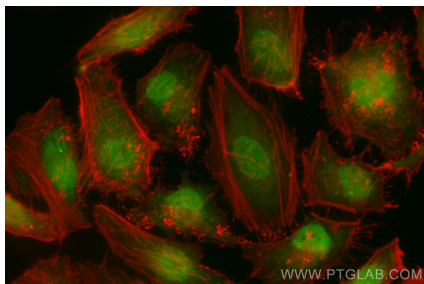
Storage

Storage:
Store at -20°C. Avoid exposure to light. Stable for one year after shipment.
Storage Buffer:
PBS with 50% Glycerol, 0.05% Proclin300, 0.5% BSA, pH 7.3.
Aliquoting is unnecessary for -20°C storage

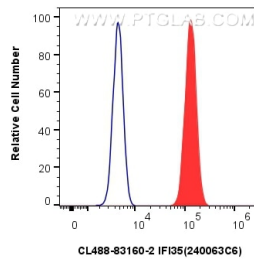
For technical support and original validation data for this product please contact:
T: 1 (888) 4PTGLAB (1-888-478-4522) (toll free in USA), or 1(312) 455-8498 (outside USA)
E: proteintech@ptglab.com
W: ptglab.com

This product is exclusively available under Proteintech Group brand and is not available to purchase from any other manufacturer.

Selected Validation Data



Immunofluorescent analysis of (4% PFA) fixed HeLa cells using CoraLite® Plus 488 IFI35 antibody (CL488-83160-2, Clone: 240063C6) at dilution of 1:200.



1x10⁶ HeLa cells were intracellularly stained with 0.8 ug CoraLite® Plus 488-conjugated IFI35 Recombinant antibody (CL488-83160-2, Clone:240063C6)(red), or 0.8 ug CoraLite® Plus 488-conjugated Rabbit IgG control Rabbit PolyAb (CL488-30000) (blue). Cells were fixed and permeabilized with True-Nuclear Transcription Factor Buffer Set.