

For Research Use Only

# CoraLite® Plus 488-conjugated HIC2 Recombinant antibody

Catalog Number:CL488-83162-7



## Basic Information

Catalog Number:

CL488-83162-7

Size:

100ul , Concentration: 1000 µg/ml by  
Nanodrop;

Source:

Rabbit

Isotype:

IgG

Immunogen Catalog Number:

AG18789

GenBank Accession Number:

BC094787

GeneID (NCBI):

23119

UNIPROT ID:

Q96JB3

Full Name:

hypermethylated in cancer 2

Calculated MW:

615 aa, 66 kDa

Purification Method:

Protein A purification

CloneNo.:

230177E8

Recommended Dilutions:

IF/ICC: 1:50-1:500

FC (Intra): 0.40 ug per 10<sup>6</sup> cells in a  
100 µl suspension

Excitation/Emission maxima  
wavelengths:

493 nm / 522 nm

## Applications

Tested Applications:

IF/ICC, FC (Intra)

Species Specificity:

human

Positive Controls:

IF/ICC : HepG2 cells,

FC (Intra) : HepG2 cells,

## Background Information

HIC2 (hypermethylated in cancer 2) is a transcription factor related to the tumor suppressor HIC1, required for normal cardiac development and lost in distal variants of 22q11 Deletion Syndrome (PMID: 29061339). HIC2 is also a POK family protein, and the amino acid sequence of its BTB/POZ and zinc-finger domains are similar to those of HIC1 (PMID: 31127867). Studies have shown that HIC2 plays a role in suppressing fetal genes for normal development of the heart and circulatory system, in embryogenesis (PMID: 24748541).

## Storage

Storage:

Store at -20°C. Avoid exposure to light. Stable for one year after shipment.

Storage Buffer:

PBS with 50% glycerol, 0.05% Proclin300, 0.5% BSA, pH7.3

Aliquoting is unnecessary for -20°C storage

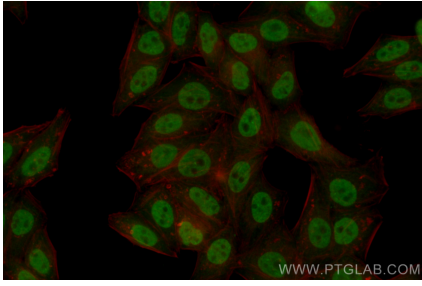
For technical support and original validation data for this product please contact:

T: 1 (888) 4PTGLAB (1-888-478-4522) (toll free  
in USA), or 1(312) 455-8498 (outside USA)

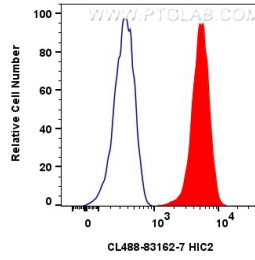
E: proteintech@ptglab.com  
W: ptglab.com

This product is exclusively available under Proteintech Group brand and is not available to purchase from any other manufacturer.

## Selected Validation Data



Immunofluorescent analysis of (4% PFA) fixed HepG2 cells using CoraLite® Plus 488 HIC2 antibody (CL488-83162-7, Clone: 230177E8) at dilution of 1:200.



1x10<sup>6</sup> HepG2 cells were intracellularly stained with 0.4 ug CoraLite® Plus 488 Hic2 Recombinant Antibody (CL488-83162-7, Clone:230177E8)(red), or 0.4 ug CoraLite® Plus 488-conjugated Rabbit IgG control Rabbit PolyAb (CL488-30000) (blue). Cells were fixed with 4% PFA and permeabilized with Flow Cytometry Perm Buffer (PF00011-C).