

For Research Use Only

# CoraLite® Plus 488-conjugated SMAD4 Recombinant antibody

Catalog Number: CL488-83169-5



## Basic Information

### Catalog Number:

CL488-83169-5

### Size:

100ul , Concentration: 1000 ug/ml by  
Nanodrop;

### Source:

Rabbit

### Isotype:

IgG

### Immunogen Catalog Number:

AG0299

### GenBank Accession Number:

BC002379

### GeneID (NCBI):

4089

### UNIPROT ID:

Q13485

### Full Name:

SMAD family member 4

### Calculated MW:

60 kDa

### Observed MW:

63-70 kDa

### Purification Method:

Protein A purification

### CloneNo.:

240026G9

### Recommended Dilutions:

IF/ICC 1:50-1:500

### Excitation/Emission maxima wavelengths:

493 nm / 522 nm

## Applications

### Tested Applications:

IF/ICC, FC (Intra)

### Species Specificity:

Human, mouse

### Positive Controls:

IF/ICC : HepG2 cells,

## Background Information

Mammalian homologs of the Drosophila Mad gene include Smad1, Smad2, Smad3, Smad4 (DPC4), Smad5, Smad6, Smad7 and Smad8. Smad1 and Smad5 are effectors of BMP2 and BMP4 function while Smad2 and Smad3 are involved in TGF and activin-mediated growth modulation. Smad4 has been shown to mediate all of the above activities through interaction with various Smad family members. Smad6 and Smad7 regulate the response to activin/ TGF signaling by interfering with TGF-mediated phosphorylation of other Smad family members.

## Storage

### Storage:

Store at -20°C. Avoid exposure to light. Stable for one year after shipment.

### Storage Buffer:

PBS with 50% Glycerol, 0.05% Proclin300, 0.5% BSA, pH 7.3.

Aliquoting is unnecessary for -20°C storage

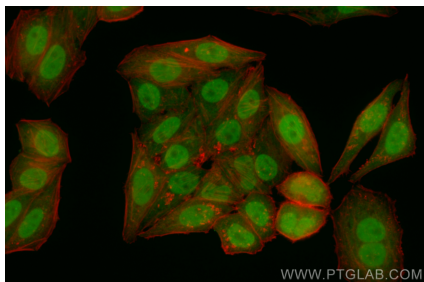
For technical support and original validation data for this product please contact:

T: 1 (888) 4PTGLAB (1-888-478-4522) (toll free  
in USA), or 1(312) 455-8498 (outside USA)

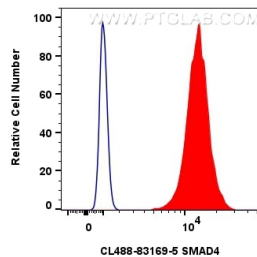
E: [proteintech@ptglab.com](mailto:proteintech@ptglab.com)  
W: [ptglab.com](http://ptglab.com)

This product is exclusively available under Proteintech Group brand and is not available to purchase from any other manufacturer.

## Selected Validation Data



Immunofluorescent analysis of (4% PFA) fixed HepG2 cells using CoraLite® Plus 488 SMAD4 antibody (CL488-83169-5, Clone: 240026G9) at dilution of 1:200.



$1 \times 10^6$  HepG2 cells were intracellularly stained with 0.8  $\mu$ g CoraLite® Plus 488 Smad4 Recombinant Antibody (CL488-83169-5, Clone:240026G9)(red), or 0.8  $\mu$ g CoraLite® Plus 488-conjugated Rabbit IgG control Rabbit PolyAb (CL488-30000) (blue). Cells were fixed and permeabilized with Transcription Factor Staining Buffer Kit (PF00011).