

For Research Use Only

# CoraLite® Plus 488-conjugated SORBS2 Recombinant antibody

Catalog Number: CL488-83189-3



## Basic Information

Catalog Number:

CL488-83189-3

Size:

100ul , Concentration: 1000 ug/ml by 8470

Nanodrop;

Source:

Rabbit

Isotype:

IgG

Immunogen Catalog Number:

AG20041

GenBank Accession Number:

BC011883

GeneID (NCBI):

8470

UNIPROT ID:

O94875

Full Name:

sorbin and SH3 domain containing 2

Calculated MW:

1100 aa, 124 kDa

Observed MW:

70-75 kDa

Purification Method:

Protein A purification

CloneNo.:

240023A8

Recommended Dilutions:

IF/ICC 1:50-1:500

Excitation/Emission maxima

wavelengths:

493 nm / 522 nm

## Applications

Tested Applications:

IF/ICC, FC (Intra)

Species Specificity:

human

Positive Controls:

IF/ICC : U2OS cells,

## Background Information

SORBS2, also known as ARGBP2, has three C-terminal SH3 domains and an N-terminal sorbin homology (SoHo) domain that interacts with lipid raft proteins. SORBS2 is widely expressed in human tissues and extremely abundant in the heart. In epithelial cells SORBS2 is located in stress fibers and the nucleus; In cardiac muscle cells. SORBS2 is located in the Z-disks of sarcomeres. The subcellular localization suggests that SORBS2 functions as an adapter protein to assemble signaling complexes in stress fibers, and may influence the contractile or elastic properties of cardiac sarcomeres(PMID: 9211900). Alternate splicing results in multiple transcript variants( PMID: 28961272).

## Storage

Storage:

Store at -20°C. Avoid exposure to light. Stable for one year after shipment.

Storage Buffer:

PBS with 50% Glycerol, 0.05% Proclin300, 0.5% BSA, pH 7.3.

Aliquoting is unnecessary for -20°C storage

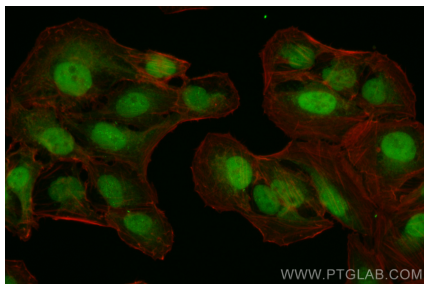
For technical support and original validation data for this product please contact:

T: 1 (888) 4PTGLAB (1-888-478-4522) (toll free  
in USA), or 1(312) 455-8498 (outside USA)

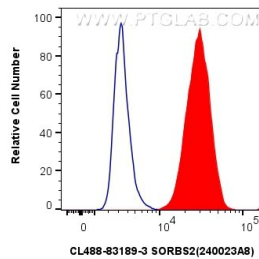
E: proteintech@ptglab.com  
W: ptglab.com

This product is exclusively available under Proteintech Group brand and is not available to purchase from any other manufacturer.

## Selected Validation Data



Immunofluorescent analysis of (4% PFA) fixed U2OS cells using Coralite® Plus 488 SORBS2 antibody (CL488-83189-3, Clone: 240023A8 ) at dilution of 1:200.



$1 \times 10^6$  U2OS cells were intracellularly stained with 0.4 ug Coralite® Plus 488-conjugated SORBS2 Recombinant antibody (CL488-83189-3, Clone:240023A8)(red), or 0.4 ug Coralite® Plus 488-conjugated Rabbit IgG control Rabbit PolyAb (CL488-30000) (blue). Cells were fixed and permeabilized with Transcription Factor Staining Buffer Kit (PF00011).