

For Research Use Only

CoraLite® Plus 488-conjugated MIF Recombinant monoclonal antibody

Catalog Number:CL488-83199-2



Basic Information

Catalog Number: CL488-83199-2	GenBank Accession Number: NM_010798.2	Purification Method: Protein A purification
Size: 100ul , Concentration: 1000 ug/ml by Nanodrop;	GeneID (NCBI): 17319	CloneNo.: 230529F2
Source: Rabbit	UNIPROT ID: P34884	Recommended Dilutions: IF/ICC: 1:50-1:500
Isotype: IgG	Full Name: macrophage migration inhibitory factor	Excitation/Emission maxima wavelengths: 493 nm / 522 nm
Immunogen Catalog Number: EG0574	Calculated MW: 13KD	
	Observed MW: 13 kDa	

Applications

Tested Applications: IF/ICC	Positive Controls: IF/ICC : NIH/3T3 cells,
Species Specificity: human, mouse, rat	

Background Information

Macrophage migration inhibitory factor (MIF) is a homo-trimeric protein that acts as a pleiotropic pro-inflammatory cytokine. It is involved in various functions, including leukocyte recruitment, inflammation, immune responses, cell proliferation, tumorigenesis, and counter-regulation of glucocorticoids (GC). MIF is a highly conserved protein of 12.5 kDa, with evolutionarily ancient homologues in plants, protozoans, nematodes, and invertebrates.

Storage

Storage:
Store at -20°C. Avoid exposure to light. Stable for one year after shipment.
Storage Buffer:
PBS with 50% glycerol, 0.05% Proclin300, 0.5% BSA, pH7.3
Aliquoting is unnecessary for -20°C storage

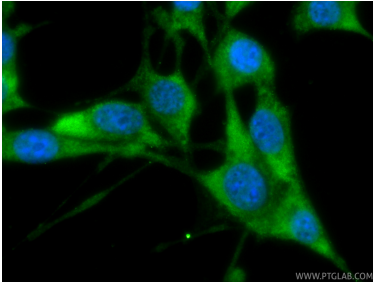
For technical support and original validation data for this product please contact:

T: 1 (888) 4PTGLAB (1-888-478-4522) (toll free
in USA), or 1(312) 455-8498 (outside USA)

E: proteintech@ptglab.com
W: ptglab.com

This product is exclusively available under Proteintech Group brand and is not available to purchase from any other manufacturer.

Selected Validation Data



Immunofluorescent analysis of (-20°C Ethanol) fixed NIH/3T3 cells using CoraLite® Plus 488 MIF antibody (CL488-83199-2, Clone: 230529F2) at dilution of 1:200.