

For Research Use Only

CoraLite® Plus 488-conjugated PLK1-phospho Recombinant antibody

Catalog Number: CL488-83260-5



Basic Information

Catalog Number:

CL488-83260-5

GenBank Accession Number:

NM_005030

Purification Method:

Protein A purification

Size:

100ul , Concentration: 1000 µg/ml by

Nanodrop;

GeneID (NCBI):

5347

CloneNo.:

240092B10

Source:

Rabbit

UNIPROT ID:

P53350

Recommended Dilutions:

IF/ICC: 1:50-1:500

Isotype:

IgG

Full Name:

polo-like kinase 1 (Drosophila)

Excitation/Emission maxima
wavelengths:

493 nm / 522 nm

Calculated MW:

68 kDa

Applications

Tested Applications:

IF/ICC

Positive Controls:

IF/ICC : HepG2 cells, HeLa cells

Species Specificity:

human

Storage

Storage:

Store at -20°C. Avoid exposure to light. Stable for one year after shipment.

Storage Buffer:

PBS with 50% glycerol, 0.05% Proclin300, 0.5% BSA, pH7.3

Aliquoting is unnecessary for -20°C storage

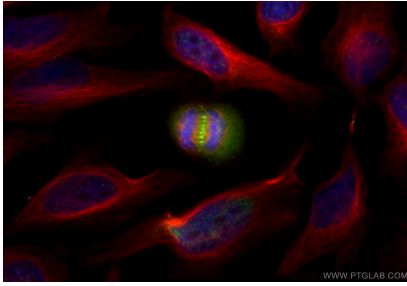
For technical support and original validation data for this product please contact:

T: 1 (888) 4PTGLAB (1-888-478-4522) (toll free
in USA), or 1(312) 455-8498 (outside USA)

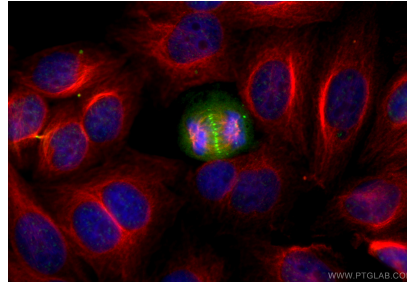
E: proteintech@ptglab.com
W: ptglab.com

This product is exclusively available under Proteintech Group brand and is not available to purchase from any other manufacturer.

Selected Validation Data



Immunofluorescent analysis of (4% PFA) fixed HeLa cells using CoraLite® Plus 488 PLK1-phospho antibody (CL488-83260-5, Clone: 240092B10) at dilution of 1:200, Alpha Tubulin antibody (66031-1-Ig, Clone: 1E4C11, red).



Immunofluorescent analysis of (4% PFA) fixed HepG2 cells using CoraLite® Plus 488 PLK1-phospho antibody (CL488-83260-5, Clone: 240092B10) at dilution of 1:200, Alpha Tubulin antibody (66031-1-Ig, Clone: 1E4C11, red).