

For Research Use Only

CoraLite® Plus 488-conjugated EFHD2 Recombinant antibody

Catalog Number: CL488-83264-5



Basic Information

Catalog Number:

CL488-83264-5

Size:

100ul , Concentration: 1000 ug/ml by
Nanodrop;

Source:

Rabbit

Isotype:

IgG

Immunogen Catalog Number:

AG35084

GenBank Accession Number:

BC023611

GeneID (NCBI):

79180

UNIPROT ID:

Q96C19

Full Name:

EF-hand domain family, member D2

Calculated MW:

27 kDa

Observed MW:

33 kDa

Purification Method:

Protein A purification

CloneNo.:

240185H5

Recommended Dilutions:

IF/ICC 1:50-1:500

Excitation/Emission maxima

wavelengths:

493 nm / 522 nm

Applications

Tested Applications:

IF/ICC

Species Specificity:

human

Positive Controls:

IF/ICC : A431 cells,

Background Information

EFHD2 also named Swiprosin-1, is a Ca²⁺ binding actin protein. The expression of EFHD2 is upregulated during the activation of immune cells, epithelial and endothelial cells. The expression of EFHD2 is regulated by diverse signaling pathways that are contingent upon the specific type of cells. EFHD2 consists of 240 amino-acids. Based on the composition, the predicted molecular weight was reported to be 27 KDa while the apparent molecular weight was 33 KDa.

Storage

Storage:

Store at -20°C. Avoid exposure to light. Stable for one year after shipment.

Storage Buffer:

PBS with 50% Glycerol, 0.05% Proclin300, 0.5% BSA, pH 7.3.

Aliquoting is unnecessary for -20°C storage

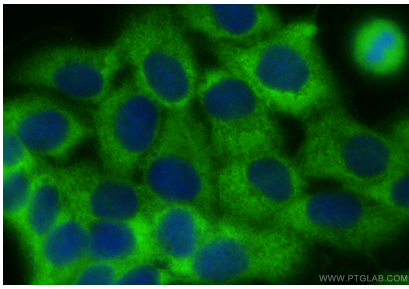
For technical support and original validation data for this product please contact:

T: 1 (888) 4PTGLAB (1-888-478-4522) (toll free
in USA), or 1(312) 455-8498 (outside USA)

E: proteintech@ptglab.com
W: ptglab.com

This product is exclusively available under Proteintech Group brand and is not available to purchase from any other manufacturer.

Selected Validation Data



Immunofluorescent analysis of (-20°C Methanol) fixed A431 cells using CoraLite® Plus 488 EFHD2 antibody (CL488-83264-5, Clone: 240185H5) at dilution of 1:200.