

For Research Use Only

CoraLite® Plus 488-conjugated KERA Recombinant antibody

Catalog Number: CL488-83272



Basic Information

Catalog Number: CL488-83272	GenBank Accession Number: BC032667	Purification Method: Protein A purification
Size: 100ul , Concentration: 1000 ug/ml by Nanodrop;	GeneID (NCBI): 11081	CloneNo.: 230399B11
Source: Rabbit	UNIPROT ID: O60938	Excitation/Emission maxima wavelengths: 493 nm / 522 nm
Isotype: IgG	Full Name: keratocan	
Immunogen Catalog Number: AG34171	Calculated MW: 352 aa, 41 kDa	

Applications

Tested Applications:
FC (Intra)

Species Specificity:
human

Background Information

Keratocan and Lumican are the predominant class II SLRPs (Small leucine-rich proteoglycans) in the corneal stroma. While not totally corneal-specific together these SLRPs are excellent biomarkers for the tissue. Mutant mice deficient for keratocan expression have transparent but thin corneal stromas with a mild increase in collagen fibril diameter with no further abnormalities. In humans, mutations in the keratocan gene are associated with a flattened cornea in a rare condition known as cornea plana. The relative specificity of keratocan to corneal keratocytes has been useful for tissue-specific targeting for genetic manipulation of the corneal stroma. (PMID: 32663498)

Storage

Storage:
Store at -20°C. Avoid exposure to light. Stable for one year after shipment.

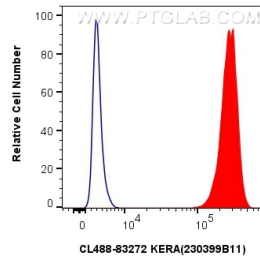
Storage Buffer:
PBS with 50% Glycerol, 0.05% Proclin300, 0.5% BSA, pH 7.3.

Aliquoting is unnecessary for -20°C storage

For technical support and original validation data for this product please contact:
T: 1 (888) 4PTGLAB (1-888-478-4522) (toll free in USA), or 1(312) 455-8498 (outside USA)
E: proteintech@ptglab.com
W: ptglab.com

This product is exclusively available under Proteintech Group brand and is not available to purchase from any other manufacturer.

Selected Validation Data



1×10^6 MCF-7 cells were intracellularly stained with 0.8 μ g Coralite® Plus 488 KERA Recombinant Antibody (CL488-83272, Clone:230399B11)(red), or 0.8 μ g Coralite® Plus 488-conjugated Rabbit IgG control Rabbit PolyAb (CL488-30000) (blue). Cells were fixed with 4% PFA and permeabilized with Flow Cytometry Perm Buffer (PF00011-C).