

For Research Use Only

# CoraLite® Plus 488-conjugated CD163 Recombinant monoclonal antibody

Catalog Number:CL488-83285-4



## Basic Information

<b>Catalog Number:</b> CL488-83285-4	<b>GenBank Accession Number:</b> NM_053094.2	<b>Purification Method:</b> Protein A purification
<b>Size:</b> 100ul , Concentration: 1000 ug/ml by Nanodrop;	<b>GeneID (NCBI):</b> 93671	<b>CloneNo.:</b> 240233A3
<b>Source:</b> Rabbit	<b>UNIPROT ID:</b> Q2VLH6-1	<b>Recommended Dilutions:</b> IF-P: 1:50-1:500
<b>Isotype:</b> IgG	<b>Full Name:</b> CD163 antigen	<b>Excitation/Emission maxima wavelengths:</b> 493 nm / 522 nm
<b>Immunogen Catalog Number:</b> EG0794	<b>Calculated MW:</b> 121 kDa	
	<b>Observed MW:</b> 160-170 kDa	

## Applications

<b>Tested Applications:</b> IF-P	<b>Positive Controls:</b> IF-P : rat liver tissue,
<b>Species Specificity:</b> mouse, rat	

## Background Information

CD163, also known as M130, is a membrane glycoprotein that belongs to the scavenger receptor superfamily (PMID: 8370408). It is an acute phase-regulated and signal-inducing macrophage protein expressed exclusively in monocytes and tissue macrophages (PMID: 11196644). CD163 mediates endocytosis of haptoglobin-haemoglobin complexes (PMID: 11196644). The uptake of haptoglobin by macrophages contributes to the recycling of iron and also to the inflammatory response (PMID: 22900885). Soluble CD163 (sCD163), as a result of ectodomain shedding during inflammatory activation of macrophages, circulates in blood and has been suggested as a plasma/serum marker for macrophage activity (PMID: 12570164).

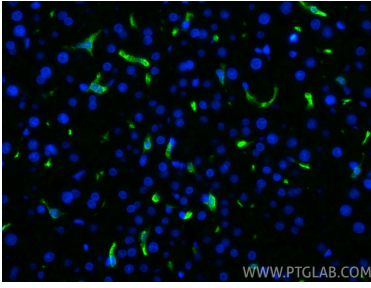
## Storage

**Storage:**  
Store at -20°C. Avoid exposure to light. Stable for one year after shipment.  
**Storage Buffer:**  
PBS with 50% glycerol, 0.05% Proclin300, 0.5% BSA, pH7.3  
**Aliquoting is unnecessary for -20°C storage**

For technical support and original validation data for this product please contact:  
T: 1 (888) 4PTGLAB (1-888-478-4522) (toll free in USA), or 1(312) 455-8498 (outside USA)  
E: proteintech@ptglab.com  
W: ptglab.com

**This product is exclusively available under Proteintech Group brand and is not available to purchase from any other manufacturer.**

## Selected Validation Data



Immunofluorescent analysis of (4% PFA) fixed paraffin-embedded rat liver tissue using CoraLite® Plus 488 CD163 antibody (CL488-83285-4, Clone: 240233A3 ) at dilution of 1:200. Heat mediated antigen retrieval with Tris-EDTA buffer (pH 9.0).