

For Research Use Only

# CoraLite® Plus 488-conjugated CD14 Recombinant antibody

Catalog Number: CL488-83297-5



## Basic Information

Catalog Number:

CL488-83297-5

Size:

100ul , Concentration: 1000 ug/ml by Nanodrop;

Source:

Rabbit

Isotype:

IgG

GenBank Accession Number:

NM\_009841.4

GeneID (NCBI):

12475

UNIPROT ID:

P10810

Full Name:

CD14 antigen

Calculated MW:

39 kDa

Purification Method:

Protein A purification

CloneNo.:

240225F1

Recommended Dilutions:

IF/ICC 1:50-1:500

Excitation/Emission maxima wavelengths:

493 nm / 522 nm

## Applications

Tested Applications:

IF/ICC

Species Specificity:

mouse

Positive Controls:

IF/ICC : RAW 264.7 cells,

## Background Information

CD14 is a 50-55 kDa glycosylphosphatidylinositol-anchored glycoprotein preferentially expressed on monocytes and macrophages, and at lower levels on granulocytes (PMID: 3385210; 2462937; 7685797). CD14 can also exist as a soluble protein. CD14 acts as a co-receptor for bacterial liposaccharides (LPS) (PMID: 1698311). It plays a major role in the inflammatory response of monocytes to LPS.

## Storage

Storage:

Store at -20°C. Avoid exposure to light. Stable for one year after shipment.

Storage Buffer:

PBS with 50% Glycerol, 0.05% Proclin300, 0.5% BSA, pH 7.3.

Aliquoting is unnecessary for -20°C storage

For technical support and original validation data for this product please contact:

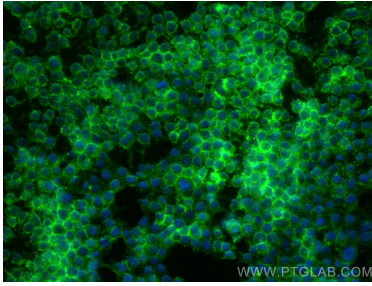
T: 1 (888) 4PTGLAB (1-888-478-4522) (toll free in USA), or 1(312) 455-8498 (outside USA)

E: [proteintech@ptglab.com](mailto:proteintech@ptglab.com)  
W: [ptglab.com](http://ptglab.com)

This product is exclusively available under Proteintech Group brand and is not available to purchase from any other manufacturer.

---

## Selected Validation Data



Immunofluorescent analysis of (4% PFA) fixed RAW 264.7 cells using CoraLite® Plus 488 CD14 antibody (CL488-83297-5, Clone: 240225F1 ) at dilution of 1:200.