

For Research Use Only

# CoraLite® Plus 488-conjugated RPS18 Recombinant antibody

Catalog Number: CL488-83327



## Basic Information

Catalog Number:

CL488-83327

GenBank Accession Number:

BC106063

Purification Method:

Protein A purification

Size:

100ul , Concentration: 1000 ug/ml by  
Nanodrop;

GeneID (NCBI):

6222

CloneNo.:

240004C10

Source:

Rabbit

UNIPROT ID:

P62269

Recommended Dilutions:

IF/ICC 1:50-1:500

Isotype:

IgG

Full Name:

ribosomal protein S18

Excitation/Emission maxima  
wavelengths:

493 nm / 522 nm

Immunogen Catalog Number:

AG12505

Calculated MW:

152 aa, 18 kDa

## Applications

Tested Applications:

IF/ICC, FC (Intra)

Positive Controls:

IF/ICC : HepG2 cells,

Species Specificity:

human

## Storage

Storage:

Store at -20°C. Avoid exposure to light. Stable for one year after shipment.

Storage Buffer:

PBS with 50% Glycerol, 0.05% Proclin300, 0.5% BSA, pH 7.3.

Aliquoting is unnecessary for -20°C storage

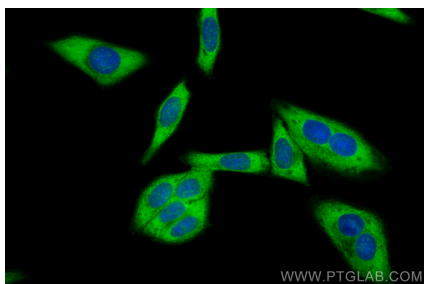
For technical support and original validation data for this product please contact:

T: 1 (888) 4PTGLAB (1-888-478-4522) (toll free  
in USA), or 1(312) 455-8498 (outside USA)

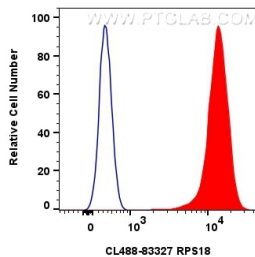
E: [proteintech@ptglab.com](mailto:proteintech@ptglab.com)  
W: [ptglab.com](http://ptglab.com)

This product is exclusively available under Proteintech  
Group brand and is not available to purchase from any  
other manufacturer.

## Selected Validation Data



Immunofluorescent analysis of (-20°C Ethanol) fixed HepG2 cells using CoraLite® Plus 488 RPS18 antibody (CL488-83327, Clone: 240004C10) at dilution of 1:200.



1x10<sup>6</sup> HepG2 cells were intracellularly stained with 0.4 ug CoraLite® Plus 488 Rps18 Recombinant Antibody (CL488-83327, Clone:240004C10)(red), or 0.4 ug CoraLite® Plus 488-conjugated Rabbit IgG control Rabbit PolyAb (CL488-30000) (blue). Cells were fixed with 4% PFA and permeabilized with Flow Cytometry Perm Buffer (PF00011-C).