

For Research Use Only

CoraLite® Plus 488-conjugated Phospho-SYK (Tyr323) Recombinant antibody

Catalog Number: **CL488-83331**



Basic Information

Catalog Number:

CL488-83331

Size:

100ul , Concentration: 1000 ug/ml by
Nanodrop;

Source:

Rabbit

Isotype:

IgG

GenBank Accession Number:

BC001645

GeneID (NCBI):

6850

ENSEMBL Gene ID:

ENSG00000165025

UNIPROT ID:

P43405

Full Name:

spleen tyrosine kinase

Calculated MW:

72 kDa

Observed MW:

70 kDa

Purification Method:

Protein A purification

CloneNo.:

2H24

Recommended Dilutions:

IF/ICC 1:50-1:500

Excitation/Emission maxima
wavelengths:

493 nm / 522 nm

Applications

Tested Applications:

IF/ICC

Species Specificity:

human

Positive Controls:

IF/ICC : pervanadate treated Ramos cells,

Background Information

SYK(spleen tyrosine kinase) is a key regulator of signal transduction events,apoptosis and orderly cell cycle progression in B-lineage lymphoid cells. The study found that in human platelets, inhibition of PKC leads to Syk hyperphosphorylation on residues Tyr-525/526 whereas Tyr-323 and Tyr-352 phosphorylations are unaffected. PKC negatively regulates Syk activity, as evidenced by hyperphosphorylation of downstream targets, LAT and PLCγ 2 upon PKC inhibition. (PMID: 23960082)

Storage

Storage:

Store at -20°C. Avoid exposure to light. Stable for one year after shipment.

Storage Buffer:

PBS with 50% Glycerol, 0.05% Proclin300, 0.5% BSA, pH 7.3.

Aliquoting is unnecessary for -20°C storage

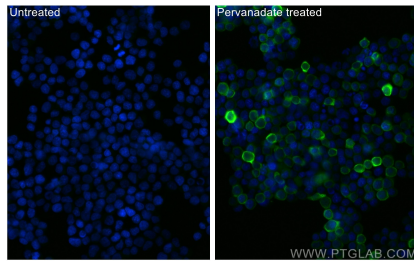
For technical support and original validation data for this product please contact:

T: 1 (888) 4PTGLAB (1-888-478-4522) (toll free
in USA), or 1(312) 455-8498 (outside USA)

E: proteintech@ptglab.com
W: ptglab.com

This product is exclusively available under Proteintech Group brand and is not available to purchase from any other manufacturer.

Selected Validation Data



Immunofluorescent analysis of (4% PFA) fixed pervanadate treated Ramos cells using CoraLite® Plus 488 Phospho-SYK (Tyr323) antibody (CL488-83331, Clone: 2H24) at dilution of 1:200.