

For Research Use Only

# CoraLite® Plus 488-conjugated Phospho-HSP27 (Ser15) Recombinant antibody

Catalog Number: CL488-83332-3



## Basic Information

**Catalog Number:**

CL488-83332-3

**GenBank Accession Number:**

BC012768

**Purification Method:**

Protein A purification

**Size:**

100ul , Concentration: 1000 ug/ml by  
Nanodrop;

**GeneID (NCBI):**

3315

**CloneNo.:**

2D4

**Source:**

Rabbit

**UNIPROT ID:**

P04792

**Excitation/Emission maxima  
wavelengths:**

493 nm / 522 nm

**Isotype:**

IgG

**Full Name:**

heat shock 27kDa protein 1

**Calculated MW:**

19-23 kDa

**Observed MW:**

27 kDa

## Applications

**Tested Applications:**

FC (Intra)

**Species Specificity:**

human

## Background Information

HSPB1, also named as HSP27, belongs to the mammalian small HSP family widely expressed in cells including the cytoplasm and nucleus. It has been reported that HSPB1 plays a key role in stress resistance, actin organization and numerous biological processes. HSPB1 can be phosphorylated in different stimulation such as cytokines, growth factors and peptide hormones on the site of Ser15, Ser78 and Ser82 by MAPKAP2 kinase. The phosphorylation of HSPB1 leads to a decrease in the size of HSPB1 oligomers. HSPB1 is associated with amyotrophic lateral sclerosis (ALS) (PMID: 8542580, 11960785, 10383393, 32231288)

## Storage

**Storage:**

Store at -20°C. Avoid exposure to light. Stable for one year after shipment.

**Storage Buffer:**

PBS with 50% Glycerol, 0.05% Proclin300, 0.5% BSA, pH 7.3.

Aliquoting is unnecessary for -20°C storage

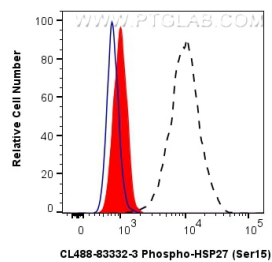
For technical support and original validation data for this product please contact:

T: 1 (888) 4PTGLAB (1-888-478-4522) (toll free  
in USA), or 1(312) 455-8498 (outside USA)

E: [proteintech@ptglab.com](mailto:proteintech@ptglab.com)  
W: [ptglab.com](http://ptglab.com)

This product is exclusively available under Proteintech Group brand and is not available to purchase from any other manufacturer.

## Selected Validation Data



$1 \times 10^6$  HeLa cells untreated (dashed lines) or treated with  $\lambda$  phosphatase which intracellularly stained with 0.25  $\mu$ g Coralite® Plus 488 Phospho-Hsp27 (Ser15) Recombinant Antibody (CL488-83332-3, Clone:2D4)(red), or 0.25  $\mu$ g Coralite® Plus 488 Rabbit IgG Isotype Control RecAb (CL488-98136, Clone: 240953C9) (blue). Cells were fixed with 4% PFA and permeabilized with 90% MeOH.