

For Research Use Only

CoraLite® Plus 488-conjugated RPL29 Recombinant antibody

Catalog Number:CL488-83377



Basic Information

Catalog Number:

CL488-83377

Size:

100ul , Concentration: 1000 ug/ml by
Nanodrop;

Source:

Rabbit

Isotype:

IgG

Immunogen Catalog Number:

AG34100

GenBank Accession Number:

BC008926

GeneID (NCBI):

6159

UNIPROT ID:

P47914

Full Name:

ribosomal protein L29

Calculated MW:

159 aa, 18 kDa

Observed MW:

20-25 kDa

Purification Method:

Protein A purification

CloneNo.:

240062F9

Recommended Dilutions:

IF/ICC 1:50-1:500

Excitation/Emission maxima
wavelengths:

493 nm / 522 nm

Applications

Tested Applications:

IF/ICC

Species Specificity:

human, mouse, rat

Positive Controls:

IF/ICC : HepG2 cells,

Background Information

Ribosomal protein L29 (Rpl29) is a component of the large (60S) ribosomal subunit which is abundantly expressed in all cell types, plays a regulatory role in translation efficiency and is essential for protein synthesis (PMID: 17195189). In contrast to adult tissues, RPL29 displays a much more widespread pattern of expression throughout embryonic development, and high levels of RPL29 are found in all developing organs. Several reports showed that RPL29 expression is up-regulated in human carcinomas and constitutes a candidate marker for abnormal growth when overexpressed (PMID: 9788632, 10383165).

Storage

Storage:

Store at -20°C. Avoid exposure to light. Stable for one year after shipment.

Storage Buffer:

PBS with 50% Glycerol, 0.05% Proclin300, 0.5% BSA, pH 7.3.

Aliquoting is unnecessary for -20°C storage

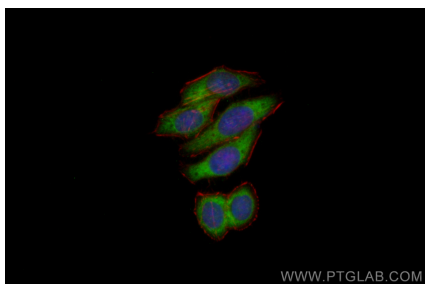
For technical support and original validation data for this product please contact:

T: 1 (888) 4PTGLAB (1-888-478-4522) (toll free
in USA), or 1(312) 455-8498 (outside USA)

E: proteintech@ptglab.com
W: ptglab.com

This product is exclusively available under Proteintech
Group brand and is not available to purchase from any
other manufacturer.

Selected Validation Data



Immunofluorescent analysis of (-20°C Ethanol) fixed HepG2 cells using CoraLite® Plus 488 RPL29 antibody (CL488-83377, Clone: 240062F9) at dilution of 1:200.